



www.loro-x.com

LORO[®]

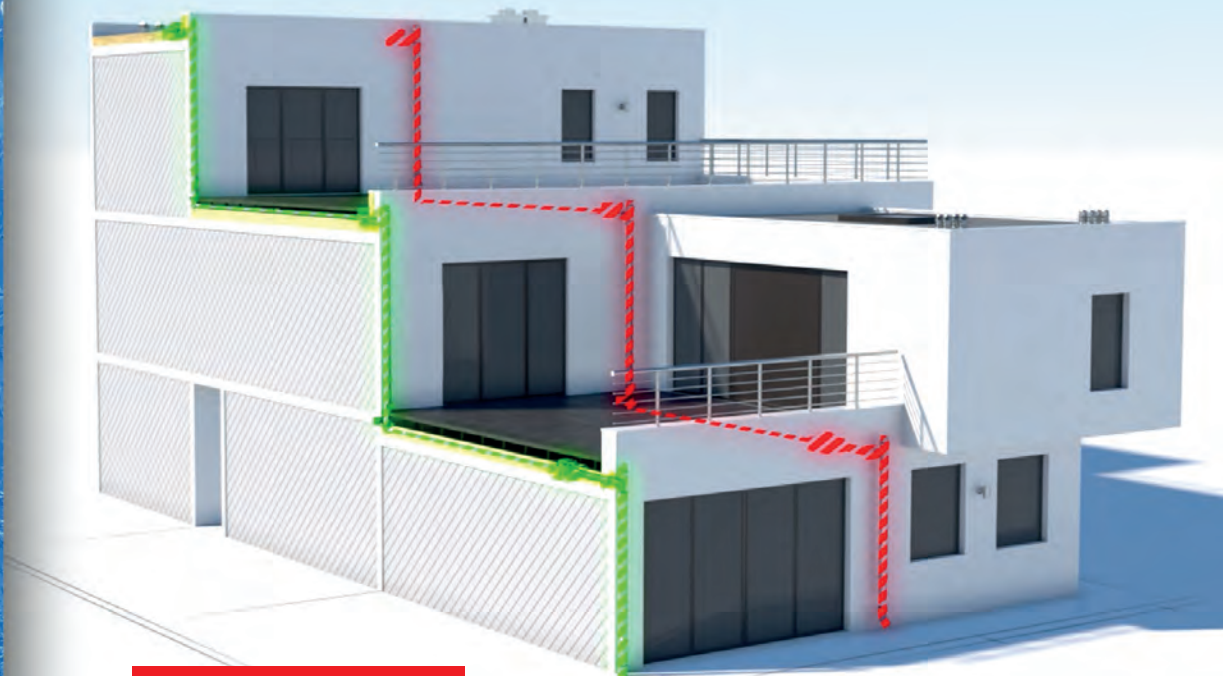
Instruction video
for laying of
cascade drainage



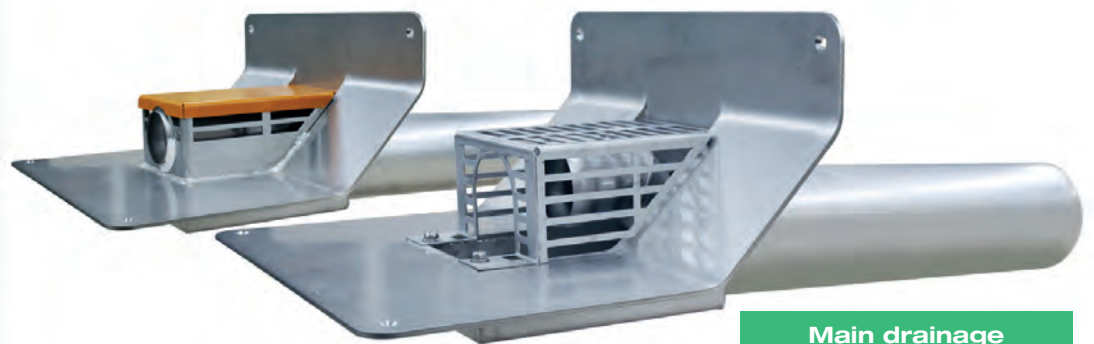
LORO-X DUOSTREAM

Cascade Drainage with pressing gravity flow

- with collector pipe between roof sealing and slab covering
- with collector pipe in the thermal insulation
- with multi-storey drains directly in the parapet and collector pipe between roof sealing and slab covering



Emergency drainage

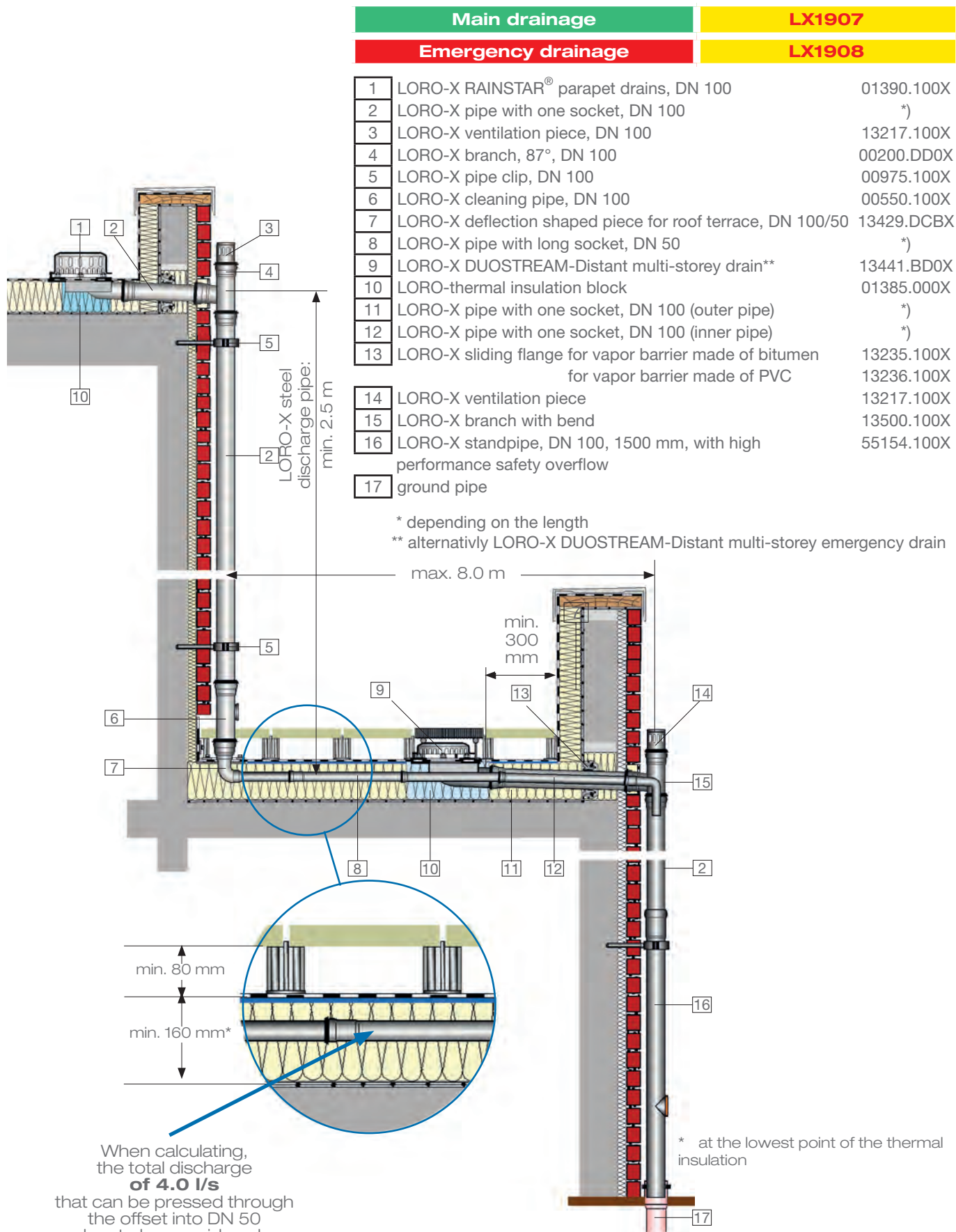


Main drainage

**Made
in
Germany**

Subject to technical alterations
Technical state August 2020

LORO-X DUOSTREAM Cascade Drainage with Collector Pipe in the Thermal Insulation



LORO-X DUOSTREAM Cascade Drainage

- collector pipe between terrace seal and slab covering
- multi-storey drain with bonding flange for bitumenous roofing sheets directly in the beginning terrace boundary
- only small penetration of the terrace structure

Main drainage		LX1981
Emergency drainage		LX1990
1	LORO-X RAINSTAR® parapeet drain, DN 100	01390.100X
2	LORO-X pipe with one socket, DN 100	*)
3	LORO-X ventilation piece, DN 100	13217.100X
4	LORO-X branch, 87°, DN 100	00200.DD0X
5	LORO-X pipe clip, DN 100	00975.100X
6	LORO-X cleaning pipe, DN 100	00550.100X
7	LORO-X deflection shaped piece for roof terrace, DN 100/50	13242.DB0X
8	LORO-X pipe, DN 50	*)
9	LORO-X DUOSTREAM-Direkt multi-storey drain**	13461.100X
10	LORO-thermal insulation block	01385.000X
11	LORO-X branch with bend	13500.100X
12	LORO-X standpipe, DN 100, 1500 mm, with high performance safety overflow	55154.100X
13	LORO-X sliding flange for vapor barrier made of bitumen	13235.100X
	for vapor barrier made of PVC	13236.100X
14	ground pipe	

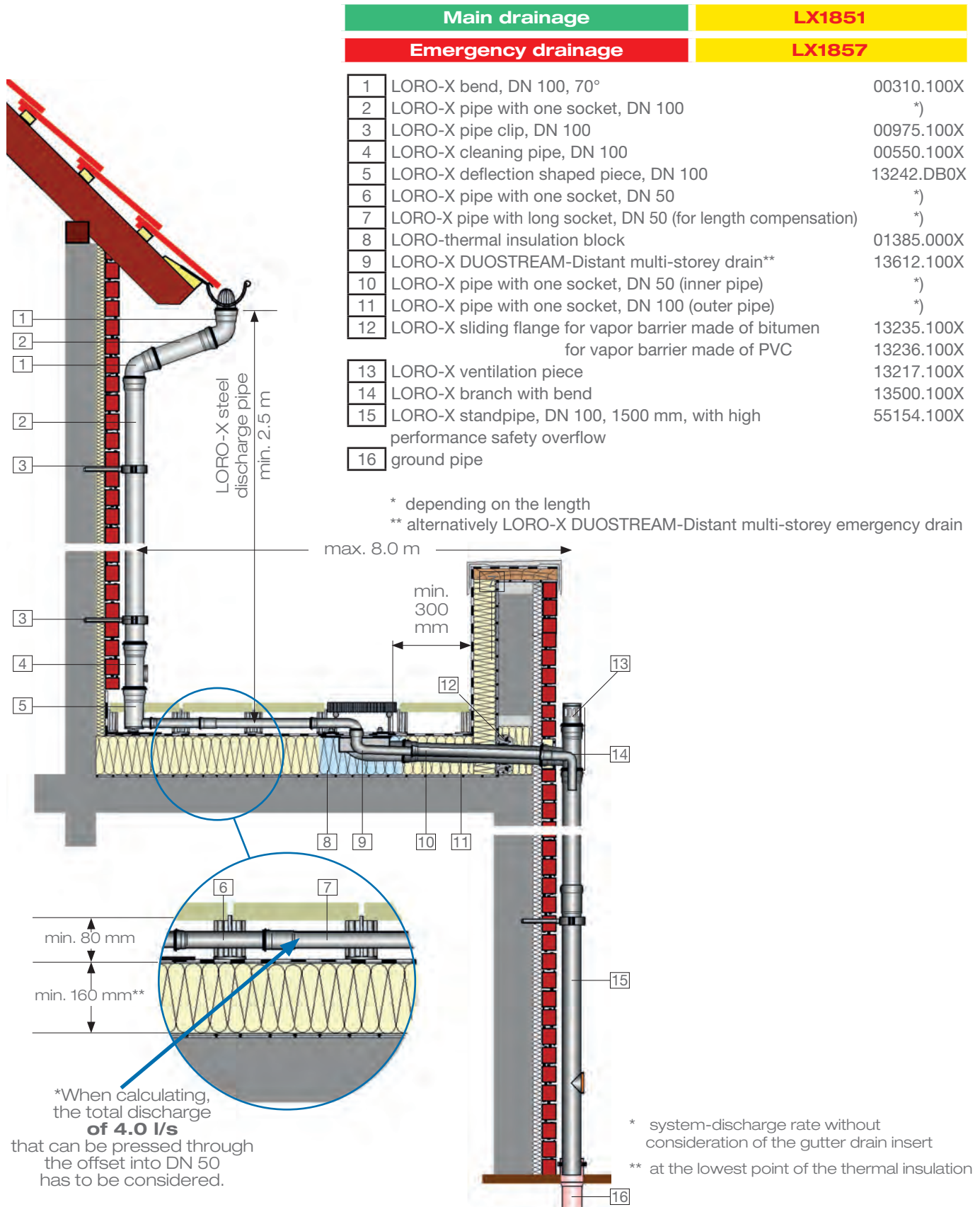
* depending on the length
 ** alternatively LORO-X DUOSTREAM-Direkt multi-storey emergency drain

When calculating, the total discharge of 4.0 l/s that can be pressed through the offset into DN 50 has to be considered.

min. 90 mm
 min. 100 mm*

* at the lowest point of the thermal insulation

LORO-X DUOSTREAM Cascade Drainage with Collector Pipe between Roof Sealing and Slab Covering



LOROWERK K.H.Vahlbrauk GmbH & Co.KG

Kriegerweg 1 - 37581 Bad Gandersheim
www.loro-x.com, infocenter@lorowerk.de