



# LORO-X Roof Drainage Systems

**New** in the LORO  
product range 2024:

LORO News

**LORO-X**  
Flat roof drains  
DRAINJET® power hood,  
two-piece, DN 125 and DN 150



**LORO-X**  
Parapet drainage  
rectangular spout,  
with bonding flange



**LORO-X**  
Inspection shaft



**LORO-X**  
Balcony drainage  
Series H,  
drainage ring,  
DN 70 and DN 100



**LORO-X**  
Balcony drainage  
Series V, DN 50



**LORO-X**  
Balcony drainage  
Series V, DN 70  
drainage ring



**LORO-X**  
Balcony drainage  
Series IV,  
DN 50



**LORO-X**  
Rain standpipe  
high performance  
safety overflow grey



Innovative  
new products  
and extensions of  
the product range

# NEW in the LORO product range

## LORO-X Roof Drainage Systems

1



Art.-No.  
21122.125X  
21122.150X

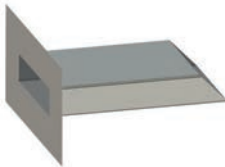
Art.-No.  
21322.125X  
21322.150X

**LORO-X Flat Roof Drains,**  
DRAINJET® Power hood, two-piece, DN 125 and 150

Page

**4-5**

2

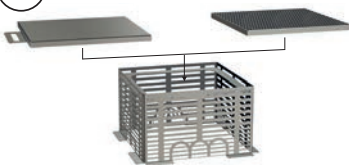


Art.-No. 19040.000X  
Art.-No. 19041.000X  
Art.-No. 19042.000X

**LORO-X Parapet Drainage**  
Rectangular Spout with Bonding Flange

**6-7**

3



Art.-No. 19990.000X  
Art.-No. 19991.000X

**LORO-X Inspection Shaft**

**8-9**

4



Art.-No. 16098.070X  
Art.-No. 16098.100X

**LORO-X Balcony Drainage, Series H,**  
Drainage ring, DN 70 and DN 100

**10-11**

5



**LORO-X Balcony Drainage, Series V,**

- DN 50  
- Drainage ring DN 70

**12-17**

6



**LORO-X Balcony Drainage, Series IV,**  
with flexibly positionable support ring,  
for plate thickness from 95-220 mm, DN 50

**18-19**

95 mm: Art.-No. 16345X  
120 mm: Art.-No. 16340X  
140 mm: Art.-No. 16341X  
160 mm: Art.-No. 16342X  
180 mm: Art.-No. 16343X  
200 mm: Art.-No. 16344X  
220 mm Art.-No. 16346X

7



**LORO-X Rain Standpipe,**  
High performance safety overflow grey

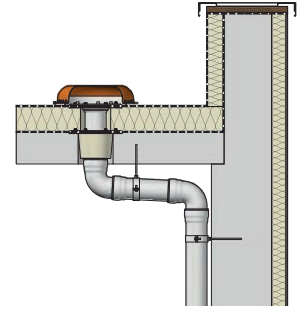
**20-21**

Art.-No. 55884.100X

# 1 News 1: LORO-X Flat Roof Drains, DRAINJET<sup>®</sup> Power hood, two-piece, DN 125 and DN 150

#### Advantages

- A high discharge rate means installing fewer drains
- Flexible connection to the roofing sheet via clamping flange




#### LORO-DRAINJET<sup>®</sup> DJ Siphonic drains

with clamping flange, made of stainless steel, DN 125 and DN 150, according to DIN EN 1253

Complete units - Series 49, high performance


Discharge rate according to specification sheet:

<b>LX948</b>	DN 125 = 50 l/s*
<b>LX960</b>	DN 150 = 50 l/s*

Main drainage				
Siphonic flow				
	vertical runoff	two-piece	DN 125	DN 150
		with thermal insulation	21122.125X	21122.150X
			●	●

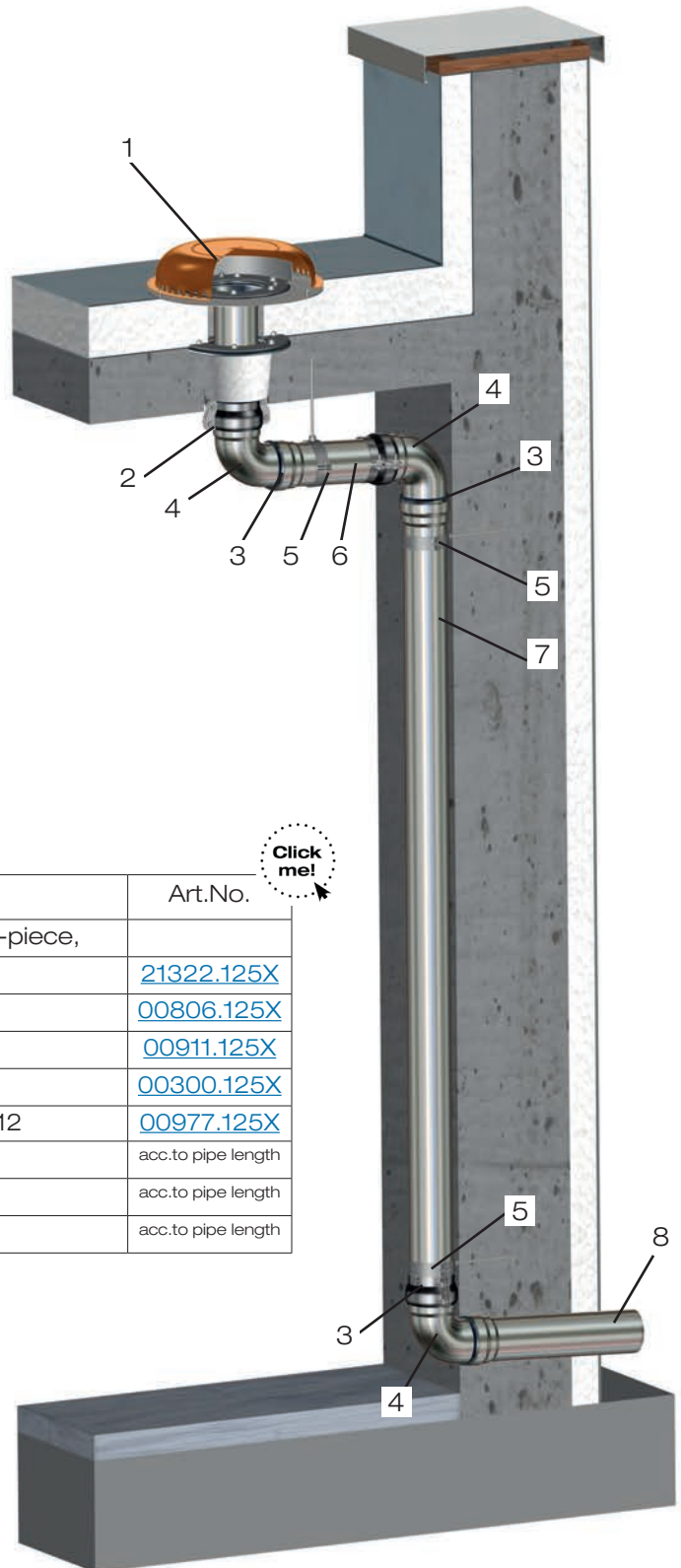
Discharge rate according to specification sheet:

<b>LX947</b>	DN 125 = 92 l/s*
<b>LX961</b>	DN 150 = 94.4 l/s*

Emergency drainage				
Siphonic flow				
	vertical runoff	two-piece	DN 125	DN 150
		with thermal insulation	21322.125X	21322.150X
			●	●

\* In keeping with test specification according to DIN EN 1253

#### Application example

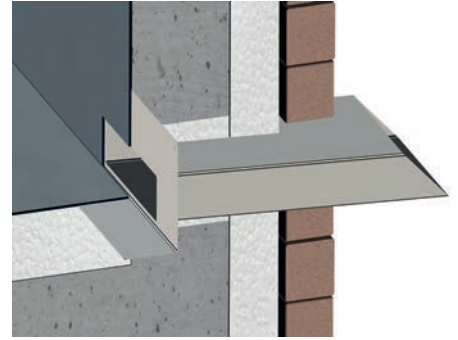


Pos.	Name	Art.No.
1	LORO-DRAINJET Siphonic drain DN 125, two-piece, with thermal insulation, emergency drainage	<a href="#">21322.125X</a>
2	LORO-X Anchor clips	<a href="#">00806.125X</a>
3	LORO-X Sealing element DN 125	<a href="#">00911.125X</a>
4	LORO-X Bend 87° DN 125	<a href="#">00300.125X</a>
5	LORO-X Pipe clips with connecting thread M12	<a href="#">00977.125X</a>
6	LORO-X Pipe DN 125	acc.to pipe length
7	LORO-X Pipe DN 125 (min. 4 m)	acc.to pipe length
8	LORO-X Pipe DN 125	acc.to pipe length

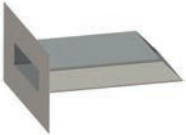
## 2 News 2: LORO-X Parapet Drainage Rectangular Spout with Bonding Flange

#### Advantages:


- Rectangular opening in the facade
- Optimal combination with angular facade elements
- Made of stainless steel, cutting on site
- Flexible and object-related production possible



#### LORO-X Rectangular spout with bonding flange

		Emergency drainage		
		150 x 50	300 x 100	500 x 100
		Gravity flow		
	with bonding flange	19040.000X	19041.000X	19042.000X
		•	•	•

#### LORO-X Facade cover

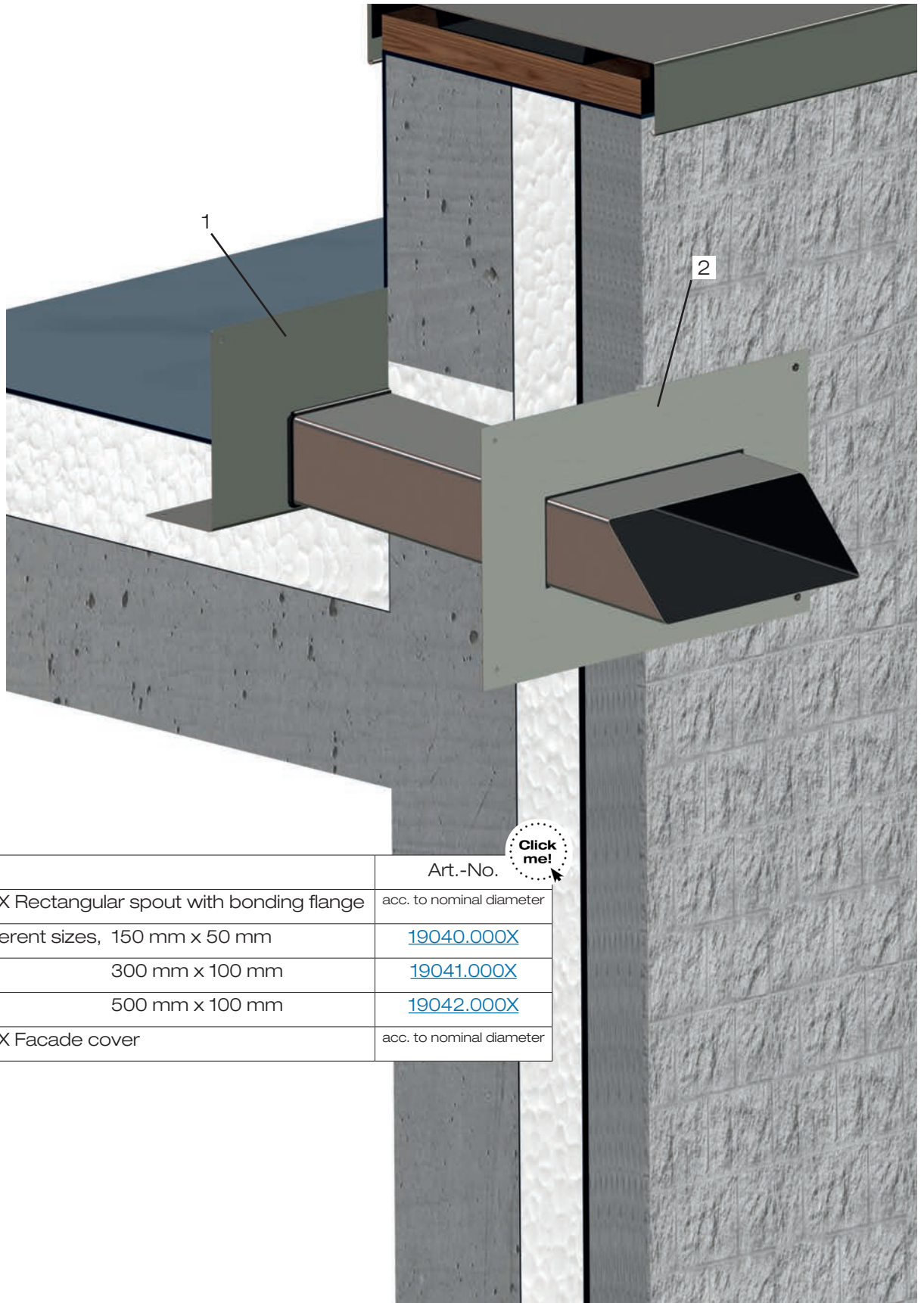
		150 x 50	300 x 100	500 x 100
		19140.000X	19141.000X	19142.000X
		•	•	•

Object-related production upon request. Please contact LOROWERK for further information.

Maximum dimensions: b = 500 mm and h = 100 mm

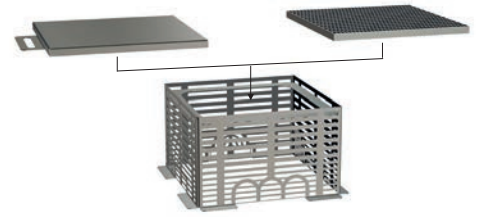
Maximum dimensions: b = 750 mm and h = 150 mm with baffle.

#### Application example



Pos.	Name	Art.-No.
1	LORO-X Rectangular spout with bonding flange	acc. to nominal diameter
	in 3 different sizes, 150 mm x 50 mm	<a href="#">19040.000X</a>
	300 mm x 100 mm	<a href="#">19041.000X</a>
	500 mm x 100 mm	<a href="#">19042.000X</a>
2	LORO-X Facade cover	acc. to nominal diameter

### 3 News 3: LORO-X Inspection Shaft



**Advantages:**

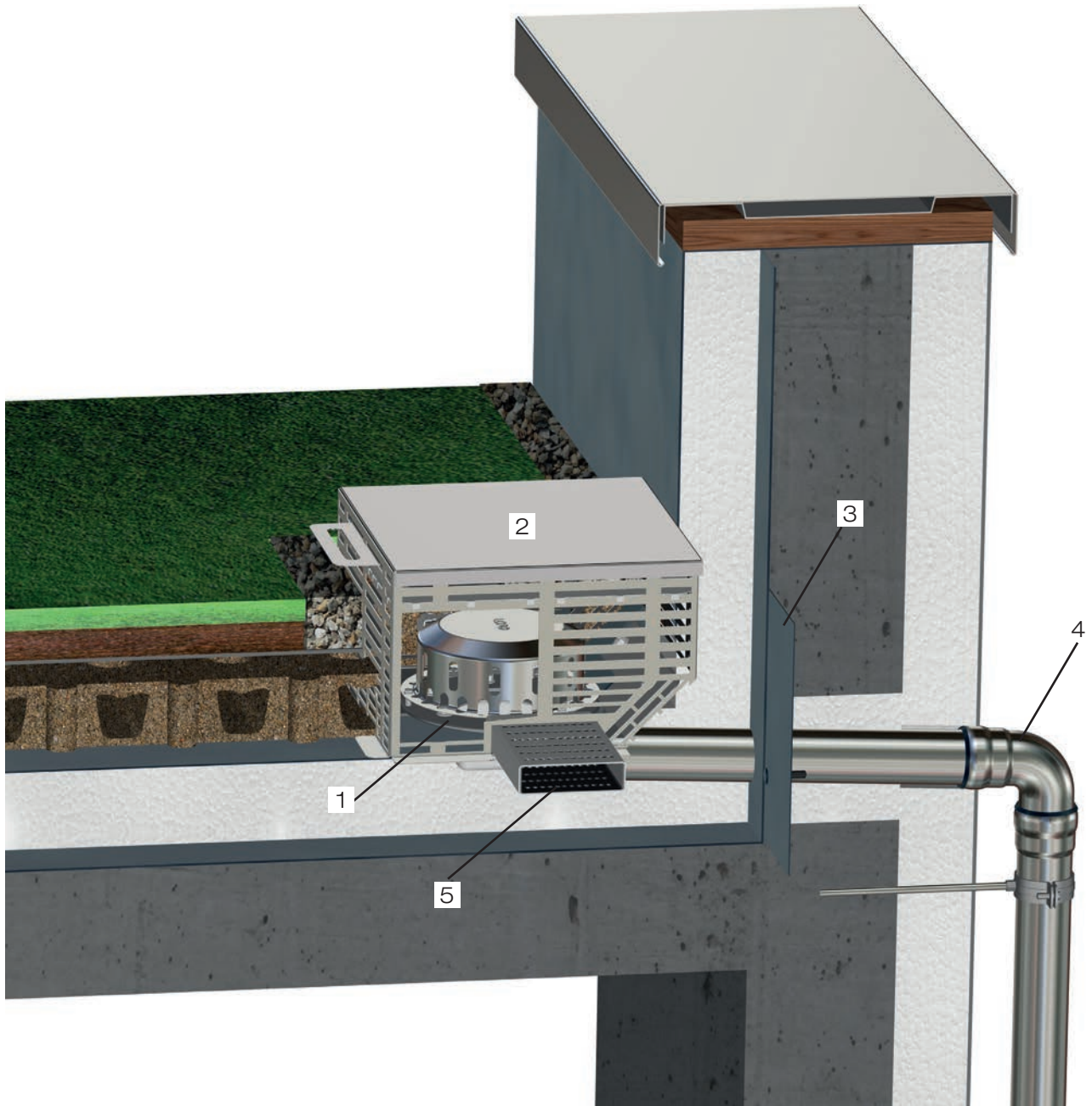
- For walkable, gravelled and green areas
- Installation on flat roofs or terraces
- Installation in plain areas or at the parapet
- Indicated notches for branch canal, 45° bituminous insulation wedges, feed to the pipe
- Compatible with vertical roof drains, parapet drains, cascade drains and Series 62

**LORO-Inspection shaft** Universally applicable for parapet and flat roof drainage

	400 mm x 400 mm for greening and graveling	19990.000X
		•
	400 mm x 400 mm for greening and graveling, walkable	19991.000X
		•



#### Application example



Click me!

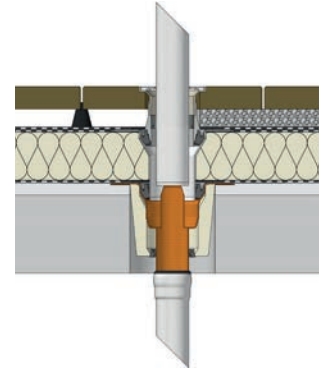
Pos.	Name	DN 50	DN 70	DN 100
1	LORO-RAINSTAR parapet drain:			
	for bituminous roof sealing sheets	<a href="#">01370.050X</a>	<a href="#">01370.070X</a>	<a href="#">01370.100X</a>
	for plastic roof sealing sheets	<a href="#">01372.050X</a>	<a href="#">01372.070X</a>	<a href="#">01372.100X</a>
2	Inspection shaft for greening and graveling	<a href="#">19990.000X</a>	<a href="#">19990.000X</a>	<a href="#">19990.000X</a>
3	LORO-X Sliding flange, for bituminous roof sealing sheets	<a href="#">13232.050X</a>	<a href="#">13235.070X</a>	<a href="#">13235.100X</a>
	for plastic roof sealing sheets	-	<a href="#">13236.070X</a>	<a href="#">13236.100X</a>
4	Further LORO-X pipe, min. 4.2 m long			
5	Branch canal	on site	on site	on site

4


#### News 4: LORO-X Balcony Drainage, Series H Drainage Ring, DN 70 and DN 100

##### New drainage ring:

- Higher discharge rates possible with the new drainage version
- More stable installation
- Secure drainage due to drainage slots
- Easy cutting of the strainer unit





##### LORO-Drainage ring

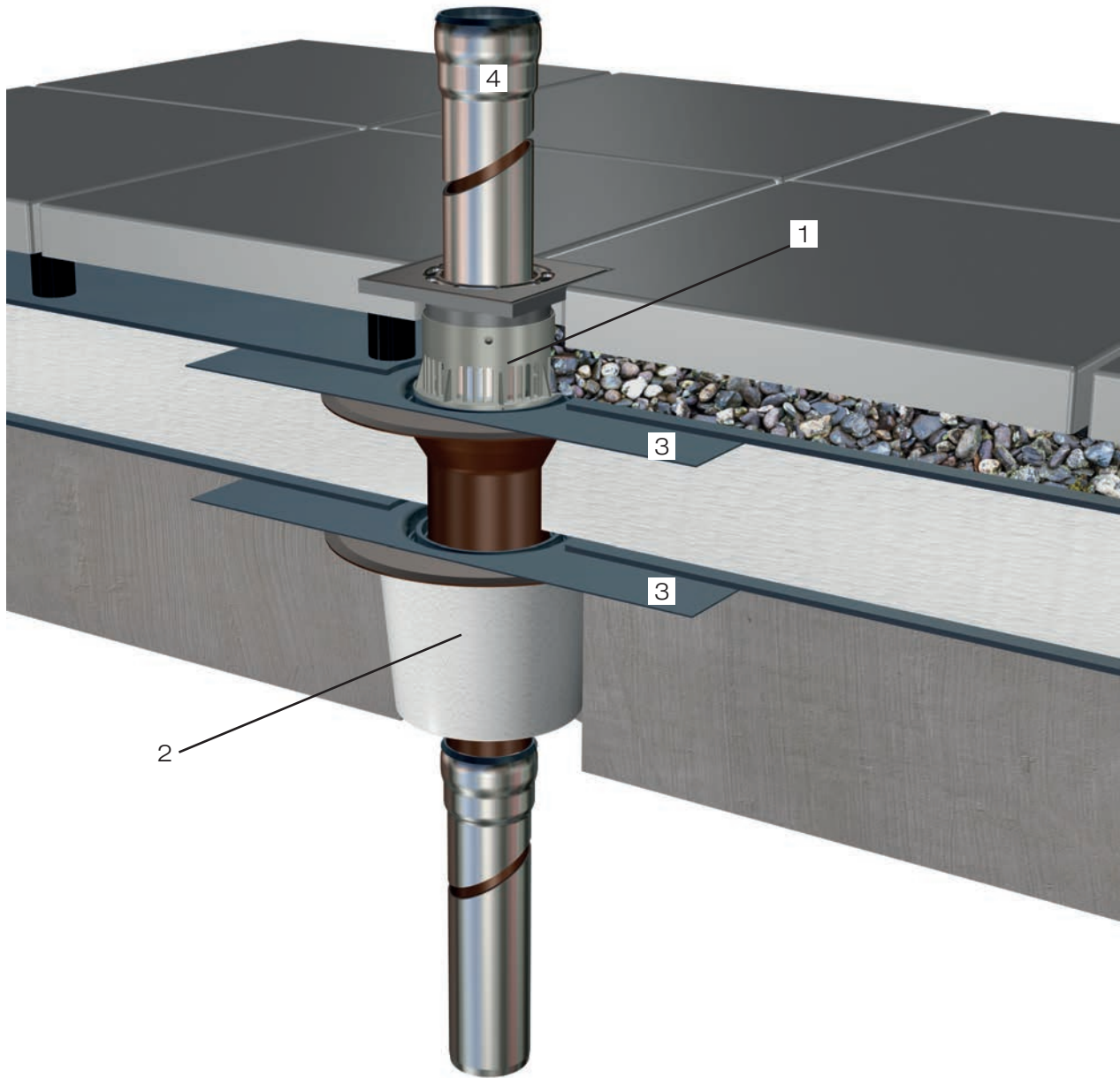
		DN 70	DN 100
		16098.070X	16098.100X
		●	●

##### LORO-balcony direct drain strainer units, series H

consisting of: strainer, strainer unit support and drainage ring

		DN 70	DN 100
	with strainer for balcony floors	16305.070X	16305.100X
		●	●
	with strainer for upper balconies	16306.070X	16306.100X
		●	●

#### Application example

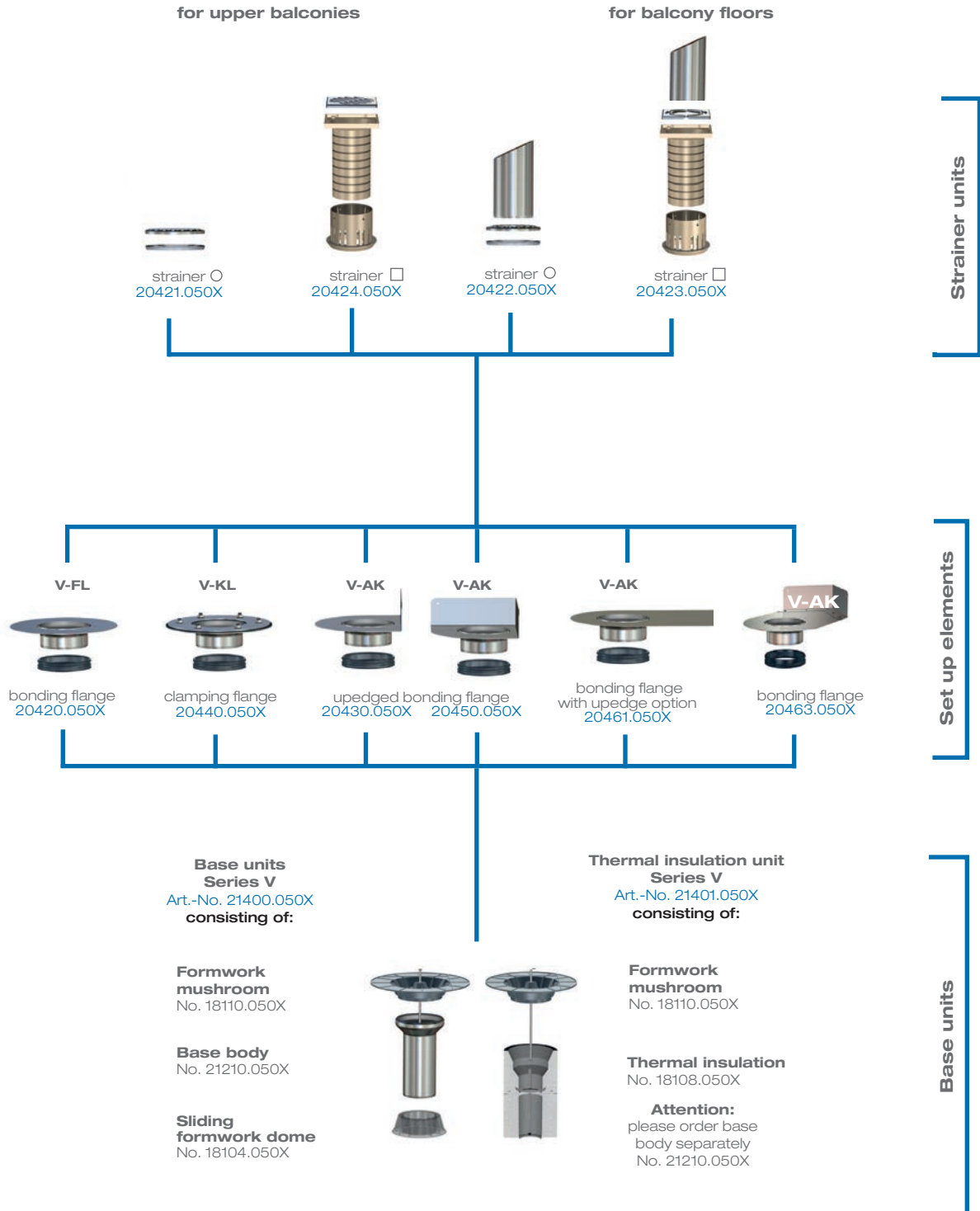


Pos.	Name	Art.-No.
1	Strainer unit, Series H, with strainer for balcony floors	<a href="#">16305.070X</a>
2	LORO-X balcony direct drain, two-piece with thermal insulation	<a href="#">16397.070X</a>
3	Standard connecting sleeve for bituminous sheets, others available upon request	<a href="#">16000.070X</a>
4	Further LORO-X pipe	

5

## News 5: LORO-X Balcony Drainage, Series V, DN 50

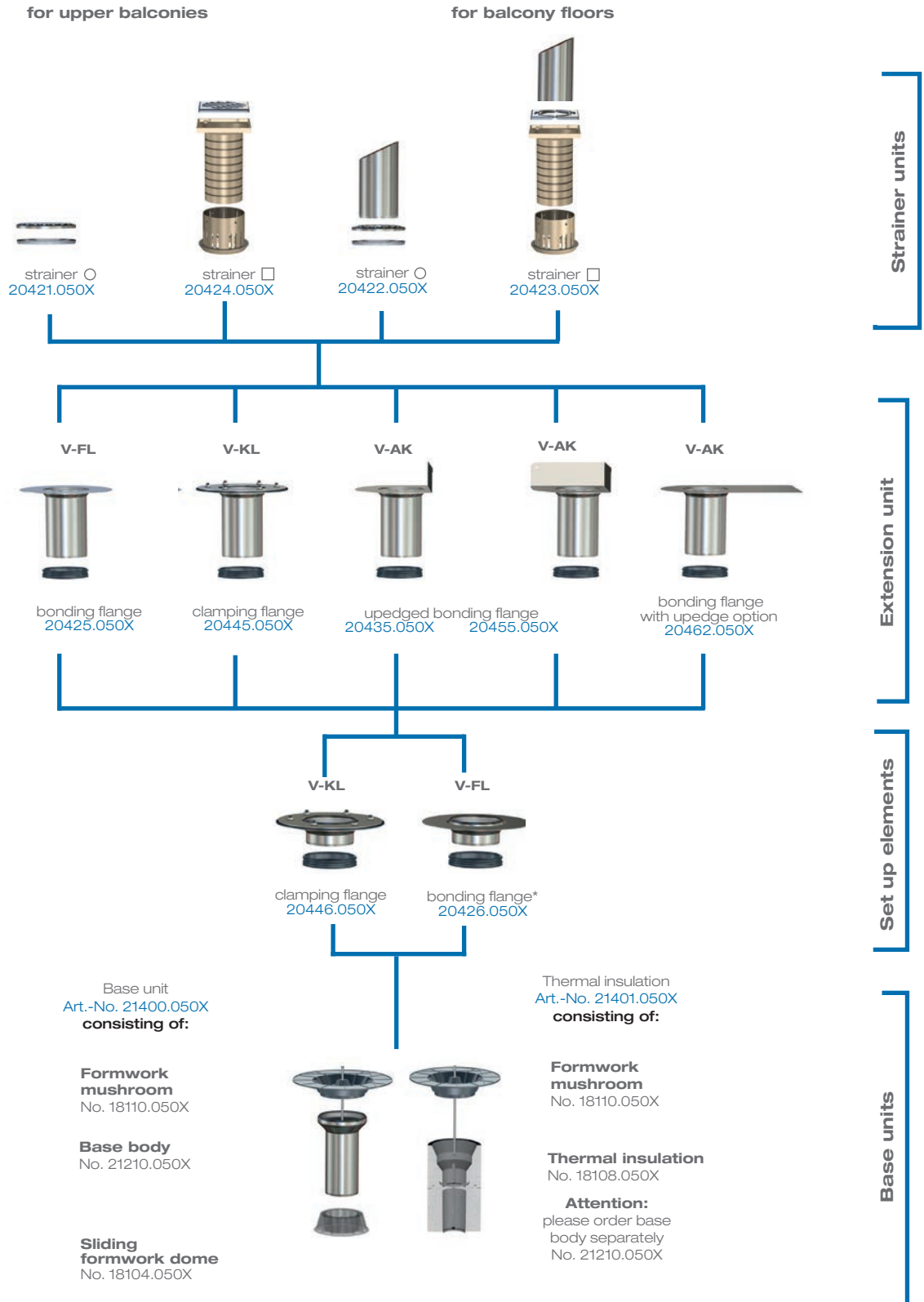
### Setup diagramm one-piece



**Attention: Please order downpipes separately.**

\* adapt flange for installation in Series V-AK

#### Setup diagramm two-piece



**Attention: Please order downpipes separately.**

\* adapt flange for installation in Series V-AK


**5**
**News 5: LORO-X Balcony Drainage, Series V, DN 50**
**Advantages:**

- Space-saving for small balconies
- Completion of Series V
- Installation of base body and setup elements possible at different times
- Modular setup elements for all balcony structures
- Setup elements changeable during renovation
- More balconies and floors per downpipe
- Barrier-free, low construction, security aspect, high-quality house building
- Great variability as with DN70 and DN100
- Made of high-quality stainless steel



**LORO-X Balcony drains, Series V**

variable balcony drainage system, made of stainless steel, DN 50





**Base unit for LORO-balcony drains, Series V**

	consisting of: base body, formwork mushroom and formwork dome	<b>DN 50</b>
		21400.050X
		●


**Thermal insulation unit for LORO-balcony drains, Series V**

	consisting of: formwork mushroom, thermal insulation body and fastening screw <u>without base body</u> 21210X for later installation	<b>DN 50</b>
		21401.050X
		●


**Individual/additional components for base body, Series V**

		<b>DN 50</b>
	formwork mushroom	18110.050X
		●
	base body Series V	21210.050X
		●
	thermal insulation body	18108.050X
		●
	formwork dome	18104.050X
		●

**Setup elements for one-piece version**
**Series V-FL**, with bonding flange, for sealing with liquid plastic

	consisting of: setup element with bonding flange, sealing element*	<b>DN 50</b>
		20420.050X
		●


**Series V-AK**, with upedged bonding flange for sealing with liquid plastic in wall areas

	consisting of: setup element with upedged bonding flange, sealing element*	<b>DN 50</b>
		20430.050X
		●

\* For DN 50 sealing element DN 70 inclusive.

Please order LORO-X steel discharge pipes separately.


**Setup elements for one-piece version**
**Series V-AK**, with bonding flange and variable bending flange for sealing with liquid plastic

consisting of: setup element with upedged bonding flange, sealing element*	<b>DN 50</b>	
	20461.050X	
	●	


**Series V-AK**, with bonding flange and variable bending flange for sealing with liquid plastic in wall-corner areas and variable bending flange

consisting of: setup element with upedged bonding flange and sealing element*	<b>DN 50</b>	
	20463.050X	
	●	

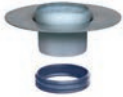
**Series V-AK**, with upedged bonding flange for sealing with liquid plastic in wall-corner areas

consisting of: setup element with upedged bonding flange for wall-corner areas, sealing element*	<b>DN 50</b>	
	20450.050X	
	●	


**Series V-KL**, with clamping flange, for sealing with sealing sheets

consisting of: setup element with clamping flange, sealing element*	<b>DN 50</b>	
	20440.050X	
	●	


**Setup elements for two-piece version**
**Series V-FL**, setup element with bonding flange, for sealing with liquid plastic

consisting of: setup element with socket and bonding flange, sealing element*	<b>DN 50</b>	
	20426.050X	
	●	


**Series V-KL**, setup element with clamping flange, for sealing with sealing sheets

consisting of: setup element with socket and clamping flange, sealing element*	<b>DN 50</b>	
	20446.050X	
	●	

**Extension unit for two-piece version**
**Series V-FL**, extension unit with bonding flange, for sealing with liquid plastic

consisting of: extension cartridge with bonding flange, sealing element*	<b>DN 50</b>	
	20425.050X	
	●	


**Series V-AK**, extension unit with upedged bonding flange for sealing with liquid plastic in wall areas

consisting of: extension cartridge with upedged bonding flange, sealing element*	<b>DN 50</b>	
	20435.050X	
	●	


\* For DN 50 sealing element DN 70 inclusive.

**Please order LORO-X steel discharge pipes separately.**

**Extension unit for two-piece version**
**Series V-AK**, extension unit with upedged bonding flange for sealing with liquid plastic in wall-corner areas

	consisting of: extension cartridge with upedged bonding flange for wall-corner areas, sealing element*	<b>DN 50</b>
		20455.050X
		●

**Series V-AK**, extension unit with bonding flange and variable bending flange for sealing with liquid plastic


	consisting of: setup element with upedged bonding flange, sealing element*	<b>DN 50</b>
		20462.050X
		●

**Series V-KL**, extension unit with clamping flange, for sealing with sealing sheets


	consisting of: extension cartridge with clamping flange, sealing element*	<b>DN 50</b>
		20445.050X
		●

\* For DN 50 sealing element inclusive.


**LORO-Balcony drain strainer units**
**For balcony structure without additional surface:**
**LORO-Balcony drain strainer unit, round, for upper balconies**

	consisting of: strainer round, without pipe penetration, support ring	<b>DN 50</b>
		20421.050X
		●


**LORO-Balcony drain strainer unit, round, for balcony floors**

	consisting of: strainer round, with pipe penetration, support ring	<b>DN 50</b>
		20422.050X
		●

**LORO-Balcony drain strainer unit, quadratic, for upper balconies**

	consisting of: strainer quadratic 150 x 150 mm, without pipe penetration, strainer support height-adjustable, support ring	<b>DN 50</b>
		20424.050X
		●

**LORO-Balcony drain strainer unit, quadratic, for balcony floors**

	consisting of: strainer quadratic 150 x 150 mm, with pipe penetration, strainer support height-adjustable, support ring	<b>DN 50</b>
		20423.050X
		●

**LORO-Drainage ring**

		<b>DN 50</b>
		18103.050X
		●

Please order LORO-X steel discharge pipes separately.

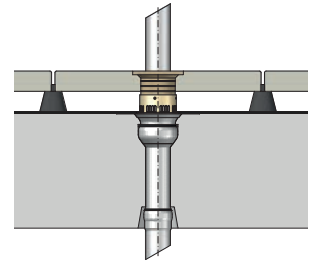


5


#### News 5: LORO-X Balcony drainage, Series V, DN 70

##### New drainage ring:


- Highly reliable and robust
- Easy installation and deinstallation
- Strainer unit is securely fixed due to provided holes
- Smaller seepage opening, but still the same discharge rate




##### LORO-Drainage ring

	<b>DN 70</b>	
	18103.070X	
	●	

##### LORO-Balcony drain strainer unit, quadratic, for upper balconies

consisting of: strainer quadratic 150 x 150 mm, without pipe penetration, strainer support height-adjustable, drainage ring	<b>DN 70</b>	
	20424.070X	
	●	

##### LORO-Balcony drain strainer unit, quadratic, for balcony floors

consisting of: strainer quadratic 150 x 150 mm, with pipe penetration, strainer support height-adjustable, drainage ring	<b>DN 70</b>	
	20423.070X	
	●	

6


**News 6: LORO-X Balcony drains, Series IV,** with flexibly positionable support ring instead of fix retaining cams, for plate thickness from 95-220 mm, DN 50



**Advantages:**


- Addition of the missing nominal diameters of Series IV
- DN 50 for smaller areas and few floors
- A very good compatibility with alkaline and carbonated concrete
- No alignment problems in inside wall-corner areas due to the variability of the support ring
- Building material class A1, non combustible for preventive fire protection, from plate thickness 150 mm also R90

**LORO-Balcony direct drains with dome, Series IV**

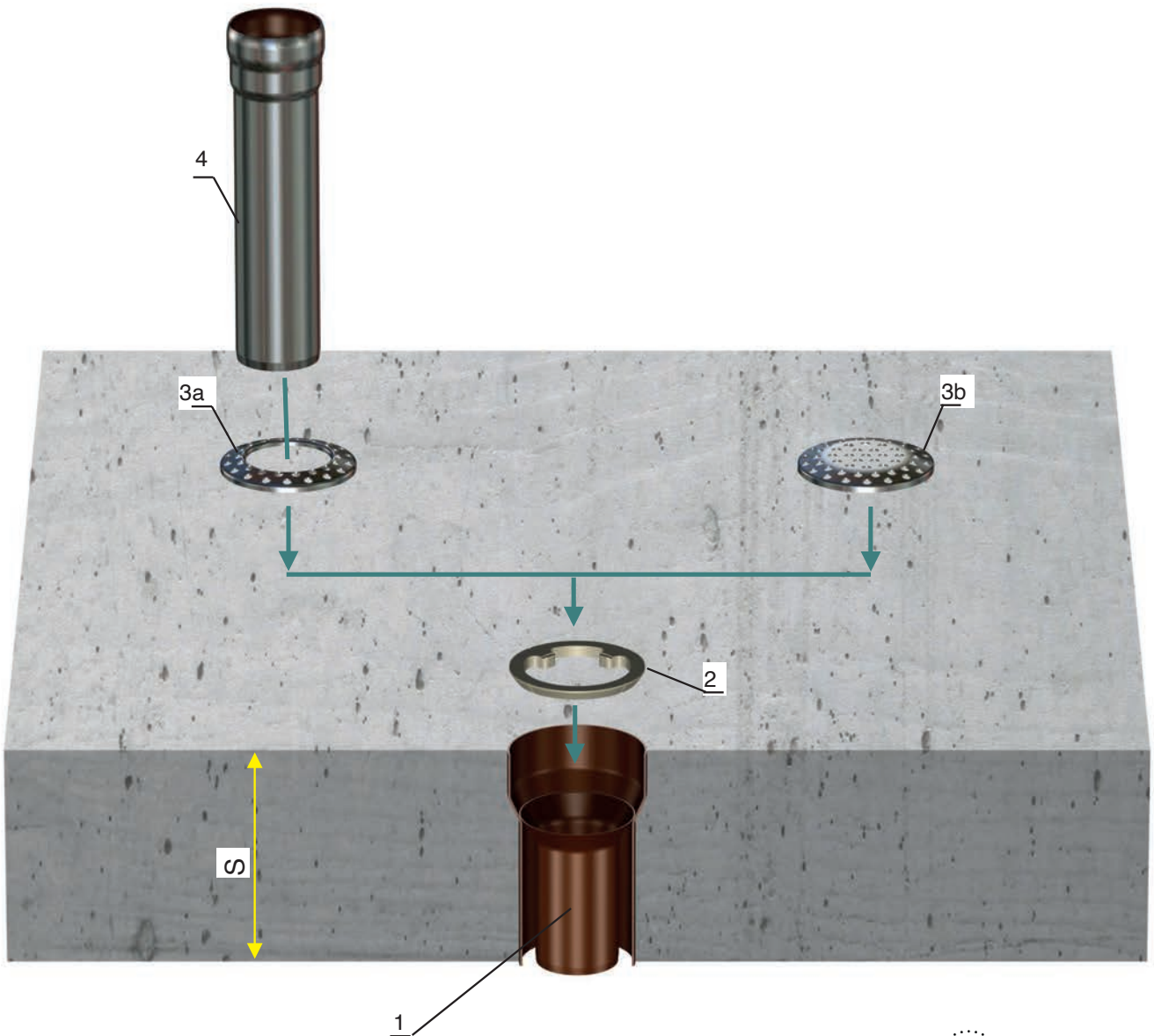
	Plate thickness	DN 50
	95 mm	16345.050X
120 mm	16340.050X	•
140 mm	16341.050X	•
160 mm	16342.050X	•
180 mm	16343.050X	•
200 mm	16344.050X	•
220 mm	16346.050X	•

**Accessoires**

**LORO-Balcony drain with strainer support**

		DN 50
	with support ring, <b>for balcony floors</b>	20422.050X
with support ring, <b>for upper balconies</b>	20421.050X	•

#### Application example



Pos.	Name	Art.-No.
1	Direct drain DN 50 with dome, Series IV	
	for plate thickness S = 95 mm	<a href="#">16345.050X</a>
	for plate thickness S = 120 mm	<a href="#">16340.050X</a>
	for plate thickness S = 140 mm	<a href="#">16341.050X</a>
	for plate thickness S = 160 mm	<a href="#">16342.050X</a>
	for plate thickness S = 180 mm	<a href="#">16343.050X</a>
	for plate thickness S = 200 mm	<a href="#">16344.050X</a>
2	Support ring	
3a	Ring strainer with pipe penetration for balcony floors	<a href="#">16193.050X</a>
3b	End strainer without pipe penetration for upper balconies	<a href="#">16191.050X</a>
4	further LORO-X pipe DN 50	



7

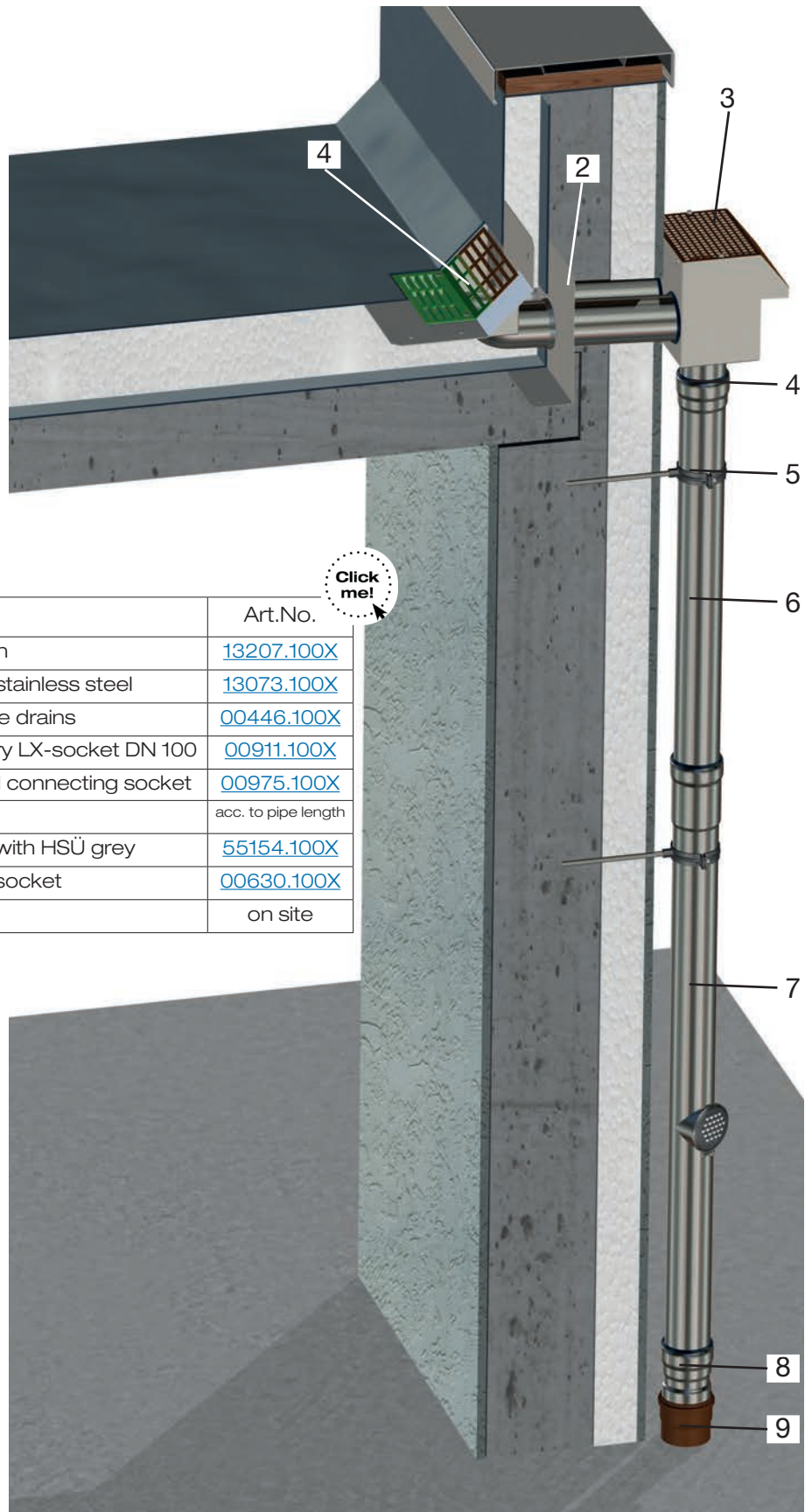
**News 7: LORO-X Rain stand pipes,**  
high performance safety overflow, grey



**LORO-X** High performance safety overflow, grey

		<b>DN 100</b>
		55884.100X
		•

#### Application example



Pos.	Name	Art.No.
1	LORO-X DUOFLUX-Parapet drain	<a href="#">13207.100X</a>
2	LORO-X Sliding flange, made of stainless steel	<a href="#">13073.100X</a>
3	LORO-X Collector for double pipe drains	<a href="#">00446.100X</a>
4	Sealing element DN 100, for every LX-socket DN 100	<a href="#">00911.100X</a>
5	LORO-X pipe clips with threaded connecting socket	<a href="#">00975.100X</a>
6	LORO-X pipe DN 100	acc. to pipe length
7	LORO-X rain standpipe DN 100, with HSÜ grey	<a href="#">55154.100X</a>
8	Connector from LORO-X to KA-socket	<a href="#">00630.100X</a>
9	Further plastic pipe	on site







**LOROWERK K.H. Vahlbrauk GmbH & Co. KG**

Kriegerweg 1 • 37581 Bad Gandersheim, Postfach 13 80 • 37577 Bad Gandersheim

Tel. +49 5382 71 0 • Telefax +49 5382 71 2 03 • Internet: [www.loro-x.com](http://www.loro-x.com) • e-mail: [infocenter@lorowerk.de](mailto:infocenter@lorowerk.de)