



LORO-X Retention Rotary Slide for Parapet Drains and DRAINLET® Flat Roof Drains

fits onto LORO-X parapet drain body:
Series 79 DN 50, DN 70 and DN 100
Series 88 DN 50, DN 70 and DN 100
Series 89 DN 70 and DN 100
and

fits onto LORO-X flat roof drain body:
Series 84 DRAINLET® DN 50, DN 70 and DN 100

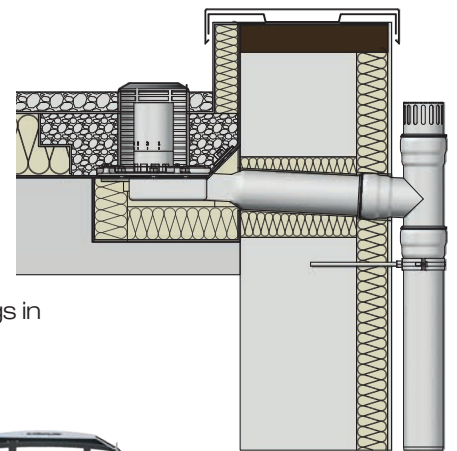
Main Drainage

Gravity flow

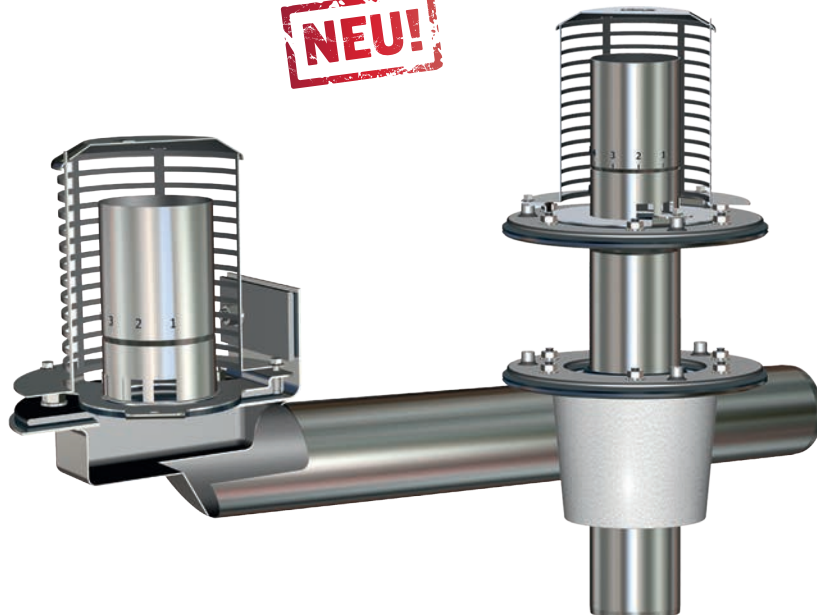
Retention roof drainage requires that the retention discharge can be adjusted with help of the retention openings at the retention pipe.

It is crucial that the relation between the retention discharge and the retention water height can be securely realised with help of the rotary slide.

In comparison to retention drains with factory-made retention openings, the number of retention openings in this case can be adjusted by the installer on site.



NEU!



Advantages:

- adjustment of the retention runoff on site
- table for the number of open retention runoff openings
- calculation programme based on measurement
- storage without object-related production possible
- weatherproof and long-lasting due to production made of stainless steel



Setup diagramm/System components

LORO-X Retention Rotary Slide for Parapet Drains and DRAINLET® Flat Roof Drains

fits onto LORO-X parapet-drain body:

Series 79, 88 and 89
DN 50, DN 70 and DN 100
and

fits onto LORO-X flat roof-drain body:

Series 84 DRAINLET® DN 50, DN 70 and DN 100



Strainer unit for inverted roof
for setup height 210 mm - 19495.000X
for setup height 500 mm - 19496.000X



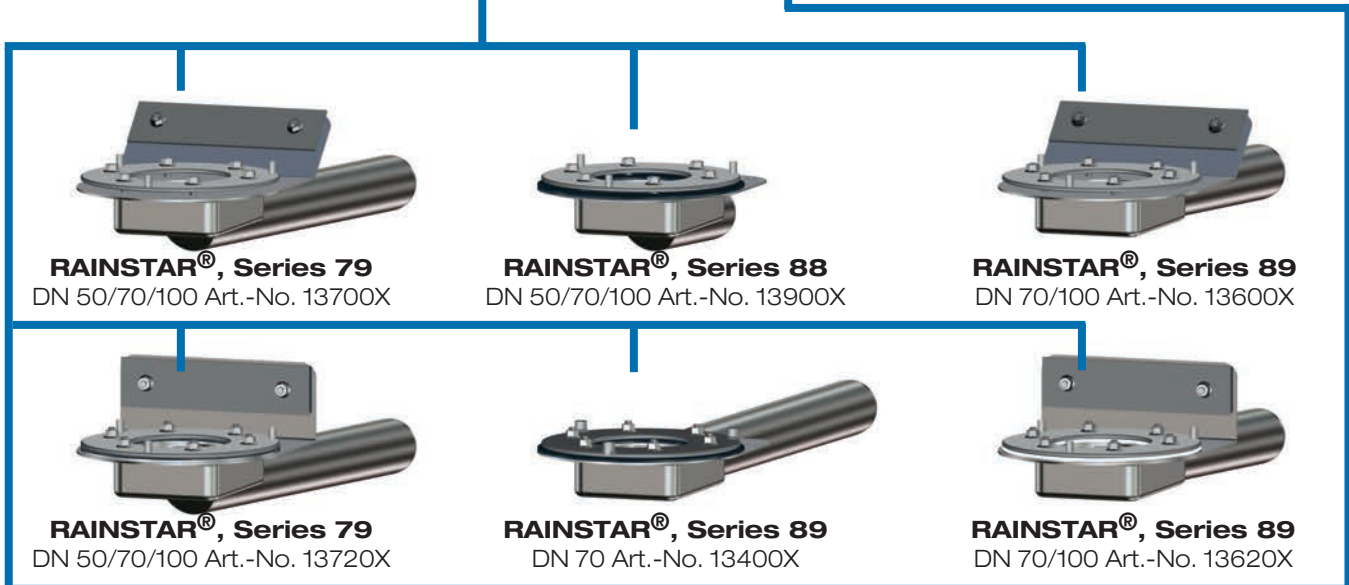
Retention rotary slide

fits onto parapet-drain body
Series 79, 88 and 89
and onto drain body Series 84
DRAINLET®, DN 50 and DN 70
Art.-No. 14331.000X



Retention rotary slide

fits onto drain body Series 84
DRAINLET®, DN 100
Art.-No. 14331.100X



RAINSTAR®, Series 79
DN 50/70/100 Art.-No. 13700X

RAINSTAR®, Series 88
DN 50/70/100 Art.-No. 13900X

RAINSTAR®, Series 89
DN 70/100 Art.-No. 13600X

RAINSTAR®, Series 79
DN 50/70/100 Art.-No. 13720X

RAINSTAR®, Series 89
DN 70 Art.-No. 13400X

RAINSTAR®, Series 89
DN 70/100 Art.-No. 13620X



DRAINLET® Base unit, one-piece,
with/without thermal insulation
DN 50/70/100 Art.-No. 21902/21901X

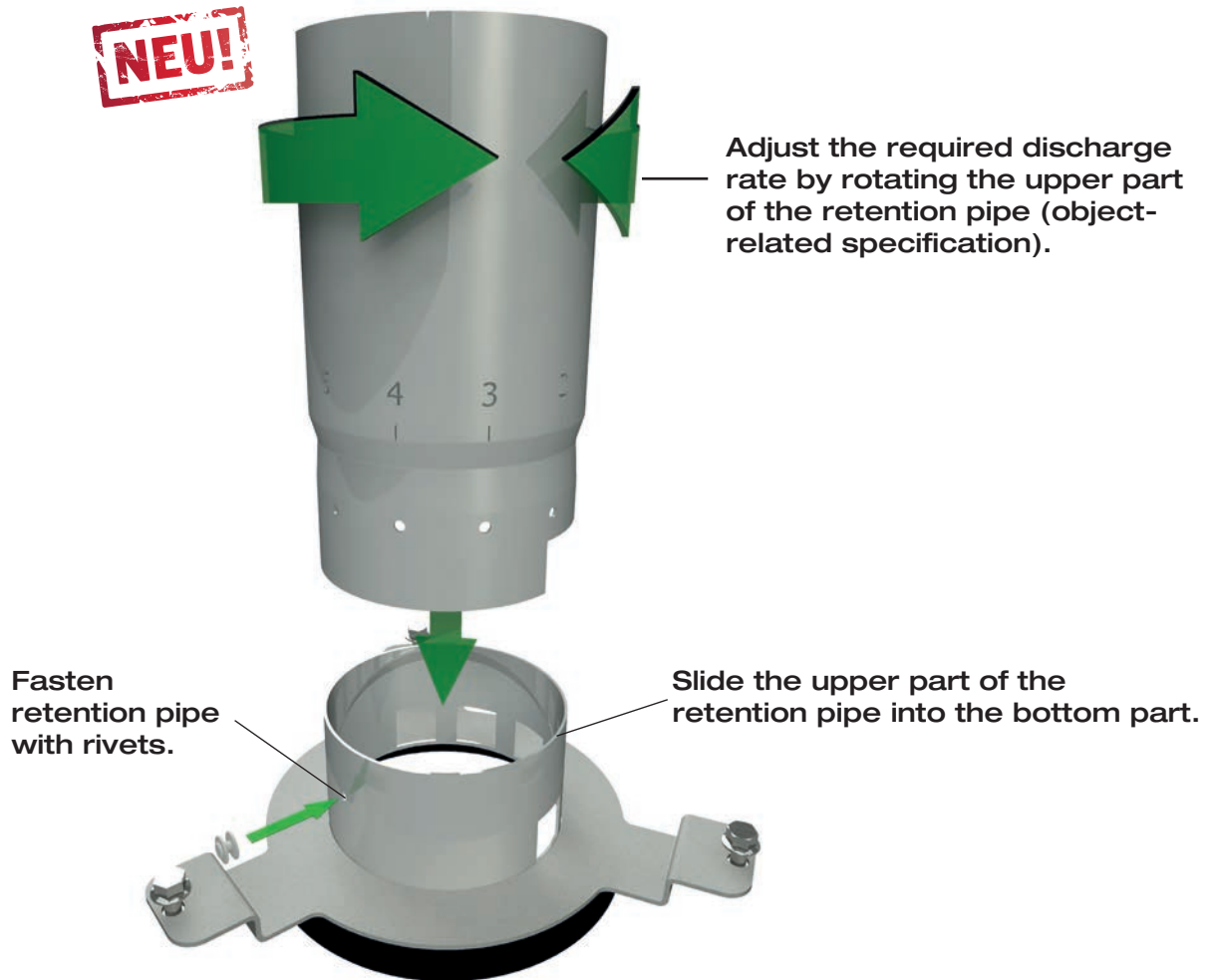


DRAINLET® Base unit,
without thermal insulation, DN 50/70/100 Art.-No. 21901X
DRAINLET® Bottom unit,
with/without thermal insulation, DN 50/70/100
Art.-No. 21992X/21991X



DRAINLET® Bottom unit,
runoff 3°, with/without thermal insulation,
DN 70/100 Art.-No. 21995X/21994X

LORO-X Retention Rotary Slide for Parapet Drains and DRAINLET[®] Flat Roof Drains



Number of open retention discharge openings

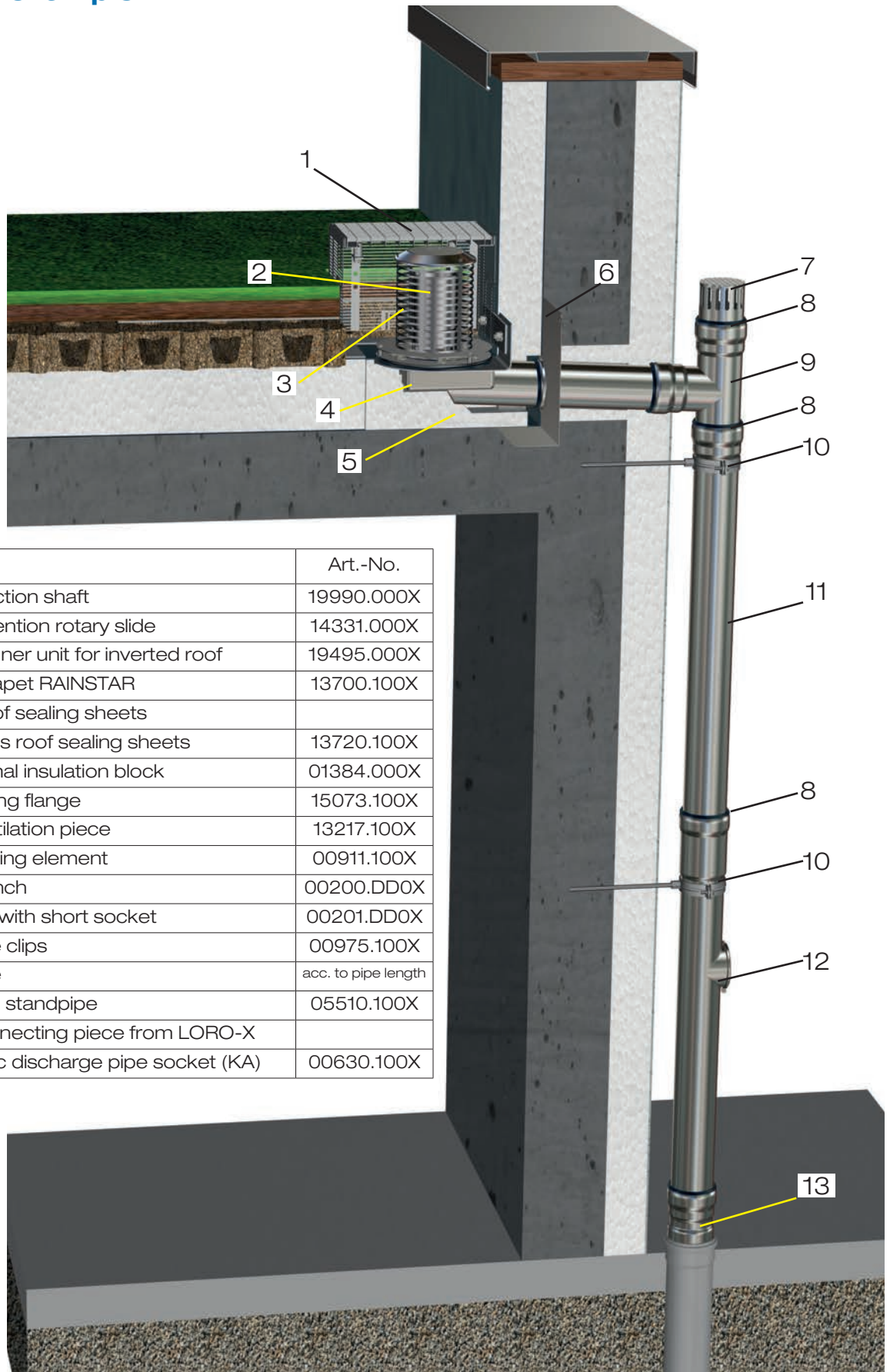
	1	2	3	4	5
0	10	10	10	10	10
0,1	18	12	11	10	10
0,2	41	18	13	12	11
0,3	79	27	18	14	13
0,4	132	41	24	18	15
0,5	-	58	31	22	18
0,6	-	79	41	27	21
0,7	-	104	52	33	25
0,8	-	132	64	41	30
0,9	-	165	79	49	35
1	-	-	95	58	41
1,1	-	-	113	68	47
1,2	-	-	132	79	54
1,3	-	-	154	91	62
1,4	-	-	176	104	70
1,5	-	-	-	118	79
1,6	-	-	-	132	88

Retention discharge Q
Liter per second

Retention water height in mm

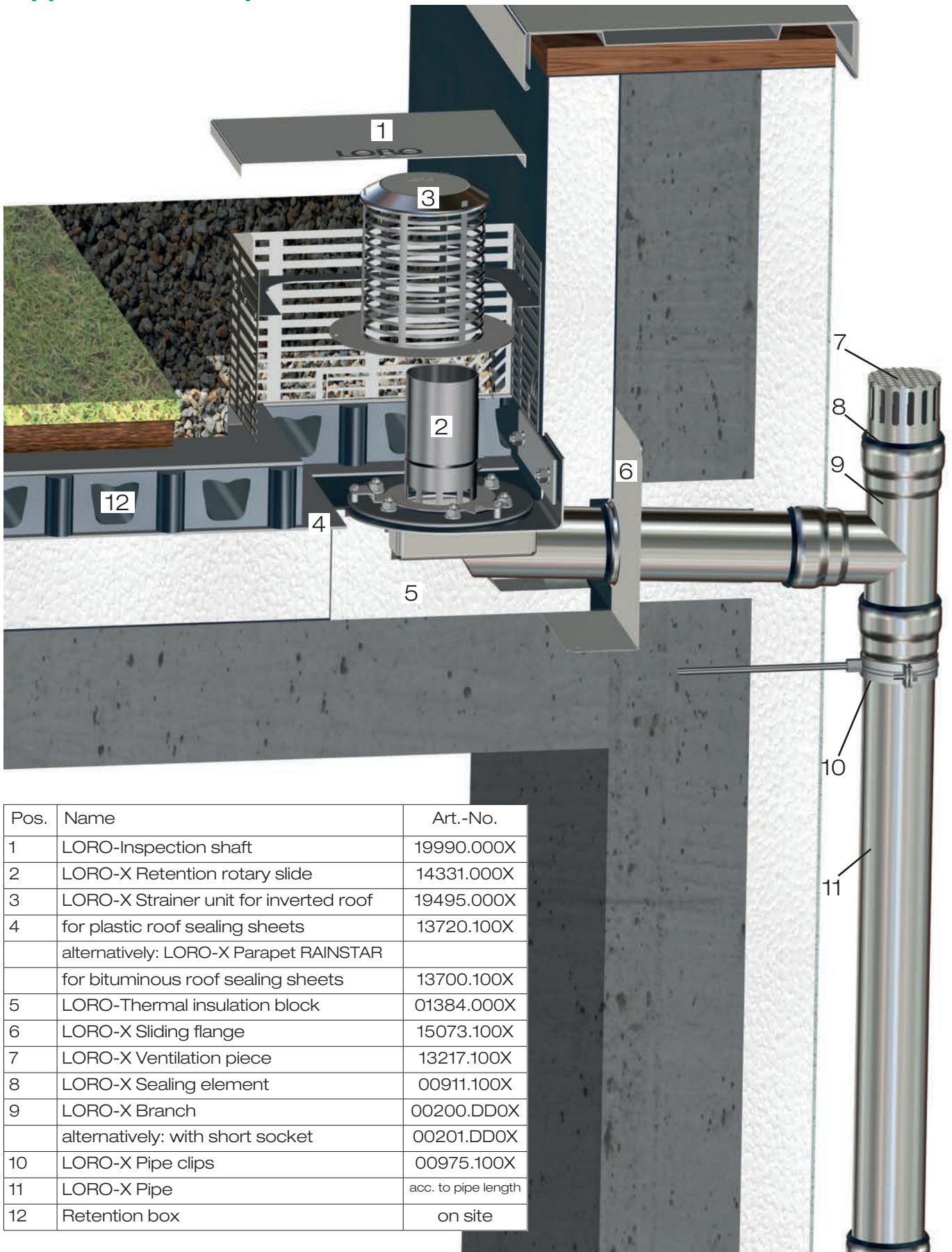
Example for the usage of the rotary slide retention table:
 given: required retention discharge 0.5 l/s, desired retention water height: 31 mm,
 Number of open retention discharge openings: 3.

Application example



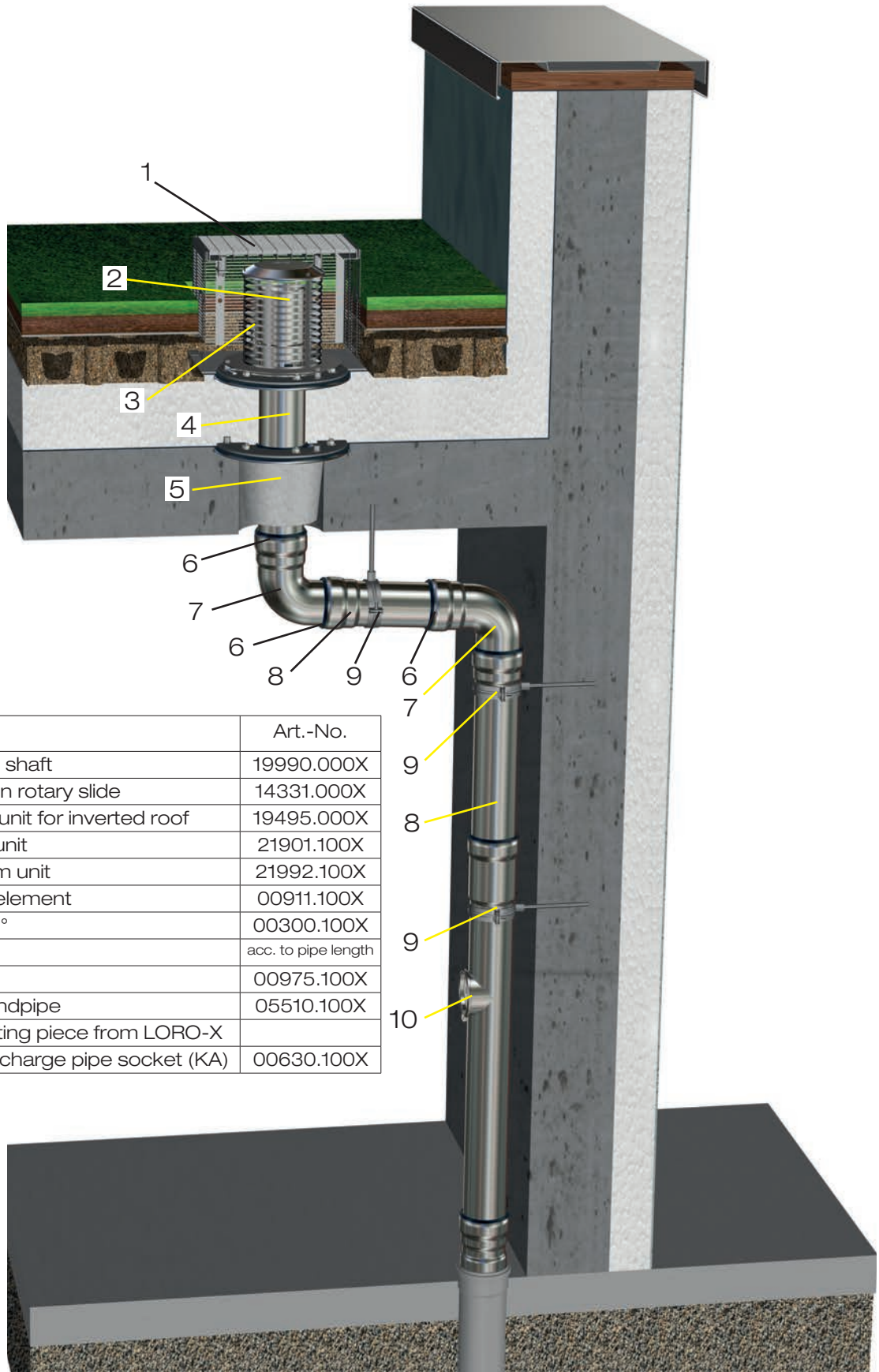
Pos.	Name	Art.-No.
1	LORO-Inspection shaft	19990.000X
2	LORO-X Retention rotary slide	14331.000X
3	LORO-X Strainer unit for inverted roof	19495.000X
4	LORO-X Parapet RAINSTAR for plastic roof sealing sheets	13700.100X
	for bituminous roof sealing sheets	13720.100X
5	LORO-Thermal insulation block	01384.000X
6	LORO-X Sliding flange	15073.100X
7	LORO-X Ventilation piece	13217.100X
8	LORO-X Sealing element	00911.100X
9	LORO-X Branch	00200.DD0X
	alternatively: with short socket	00201.DD0X
10	LORO-X Pipe clips	00975.100X
11	LORO-X Pipe	acc. to pipe length
12	LORO-X Rain standpipe	05510.100X
13	LORO-X Connecting piece from LORO-X pipe to plastic discharge pipe socket (KA)	00630.100X

Application example



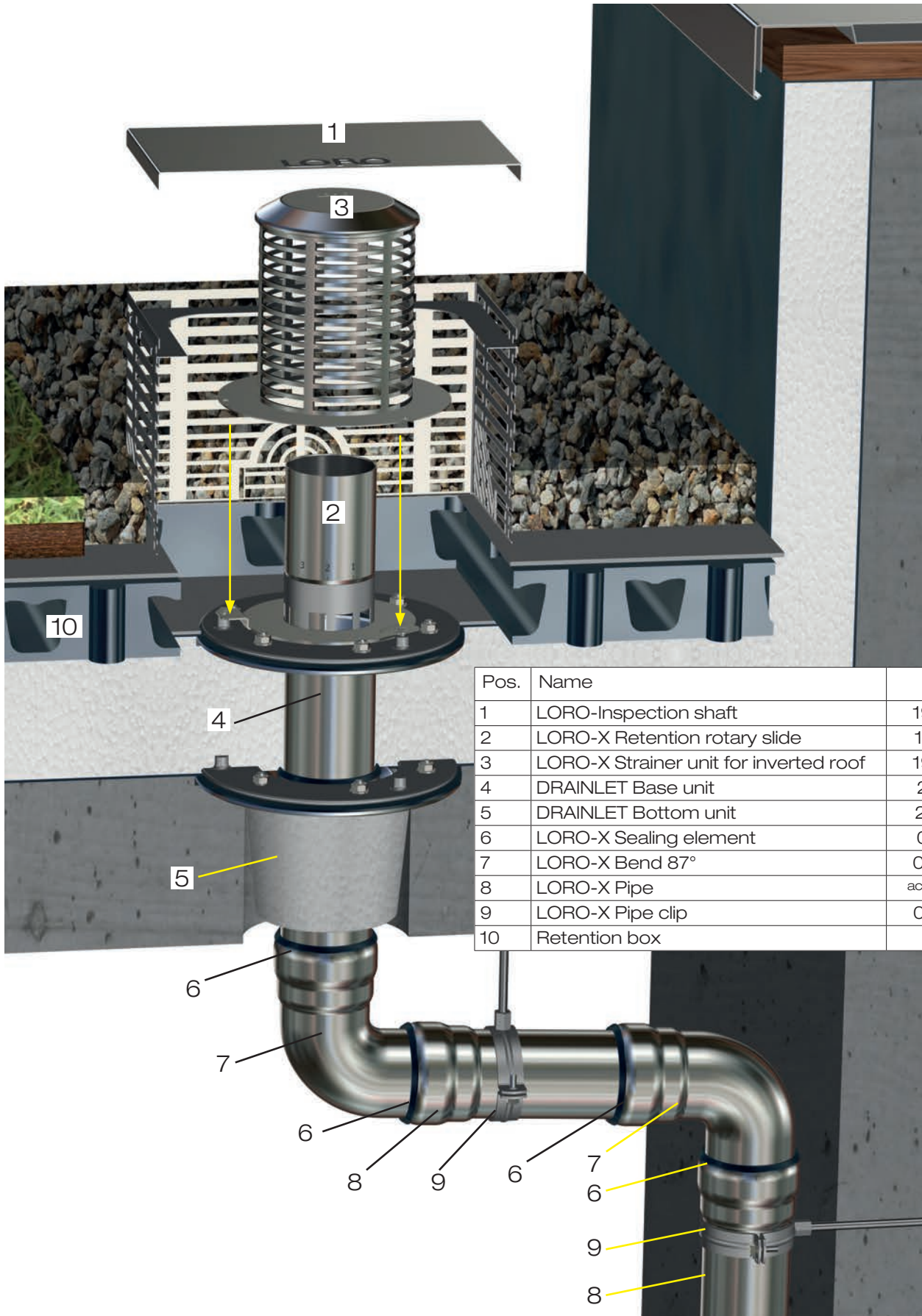
Pos.	Name	Art.-No.
1	LORO-Inspection shaft	19990.000X
2	LORO-X Retention rotary slide	14331.000X
3	LORO-X Strainer unit for inverted roof	19495.000X
4	for plastic roof sealing sheets	13720.100X
	alternatively: LORO-X Parapet RAINSTAR	
	for bituminous roof sealing sheets	13700.100X
5	LORO-Thermal insulation block	01384.000X
6	LORO-X Sliding flange	15073.100X
7	LORO-X Ventilation piece	13217.100X
8	LORO-X Sealing element	00911.100X
9	LORO-X Branch	00200.DDOX
	alternatively: with short socket	00201.DDOX
10	LORO-X Pipe clips	00975.100X
11	LORO-X Pipe	acc. to pipe length
12	Retention box	on site

Application example

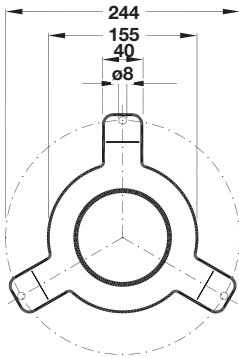
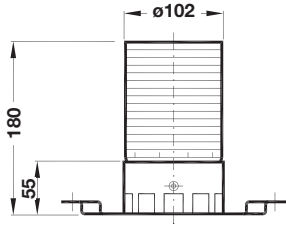


Pos.	Name	Art.-No.
1	LORO-Inspection shaft	19990.000X
2	LORO-X Retention rotary slide	14331.000X
3	LORO-X Strainer unit for inverted roof	19495.000X
4	DRAINLET Base unit	21901.100X
5	DRAINLET Bottom unit	21992.100X
6	LORO-X Sealing element	00911.100X
7	LORO-X Bend 87°	00300.100X
8	LORO-X Pipe	acc. to pipe length
9	LORO-X Pipe clip	00975.100X
10	LORO-X Rain standpipe	05510.100X
11	LORO-X Connecting piece from LORO-X pipe to plastic discharge pipe socket (KA)	00630.100X

Application example



Pos.	Name	Art.-No.
1	LORO-Inspection shaft	19990.000X
2	LORO-X Retention rotary slide	14331.000X
3	LORO-X Strainer unit for inverted roof	19495.000X
4	DRAINLET Base unit	21901.100X
5	DRAINLET Bottom unit	21992.100X
6	LORO-X Sealing element	00911.100X
7	LORO-X Bend 87°	00300.100X
8	LORO-X Pipe	acc. to pipe length
9	LORO-X Pipe clip	00975.100X
10	Retention box	on site



LORO-X
Retention rotary slide for
parapet drains DN 50 - DN 100 and
DRAINLET® flat roof drains
DN 50 and DN 70

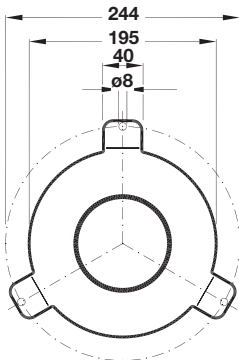
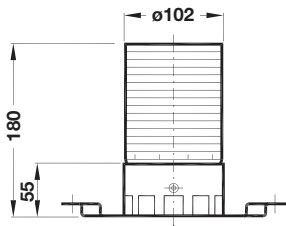
made of stainless steel, according to DIN EN 1253
 for a planned rainwater retention on the roof

fits onto LORO-X parapet drain body:
 Series 79 DN 50, 70 and DN 100
 Series 88 DN 50, 70 and DN 100
 Series 89 DN 70 and DN 100
 and

fits onto LORO-X flat roof drain body:
 Series 84 DRAINLET® DN 50 and DN 70

DN 100: [Art.-No. 14331.000X](#)

weight: 0,9 kg



LORO-X
Retention rotary slide for DRAINLET®
flat roof drains DN 100

made of stainless steel, according to DIN EN 1253
 for a planned rainwater retention on the roof

fits onto LORO-X flat roof drain body:
 Series 84 DRAINLET® DN 100

DN 100: [Art.-No. 14331.100X](#)

weight: 0,9 kg