

## LORO-X Flat Roof Drainage Systems Main-Emergency-Combination Vertical, DN 100/50

Main drainage	Emergency drainage
Gravity flow	Gravity flow
Combination	

The LORO-X pipe-in-pipe-principle has proven reliable for the parapet drainage in many cases. It also offers decisive advantages for the vertical drainage.

Thus, the number of roof penetrations from the roof into the building can be reduced because the emergency drainage is transported through the same roof penetration but a separate flow route.

In the case of special roof drainage projects - e. g. central bus stations with modern pillar drainage - security and aesthetics of the bus station are optimised.



Model: Big Plate

### Advantages:

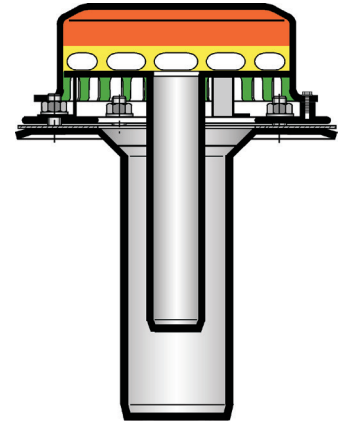
- main and emergency drainage in one system
- fewer roof penetrations
- optimal for pillar drainage and roof edge overhang
- small nominal diameters achieve a high discharge
- in the building, separation of main and emergency drainage into 2 lines



# Specification sheet LX 1845

## Central bus station roof drainage

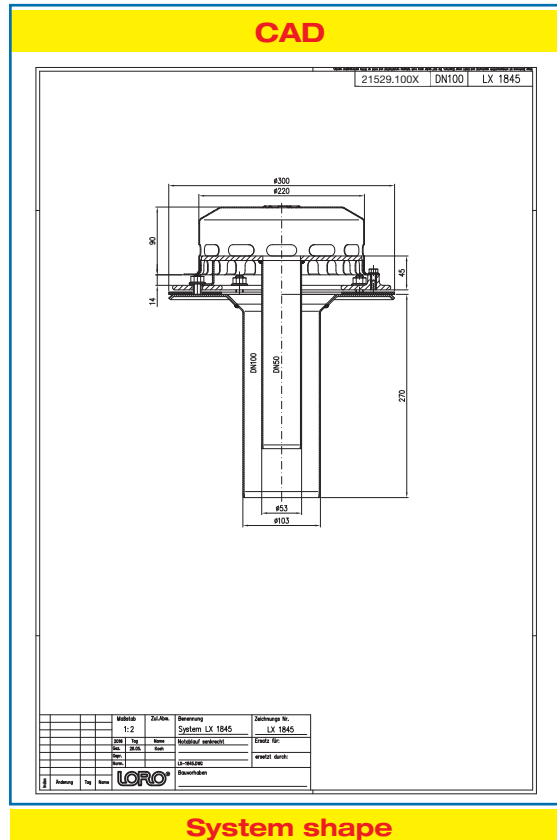
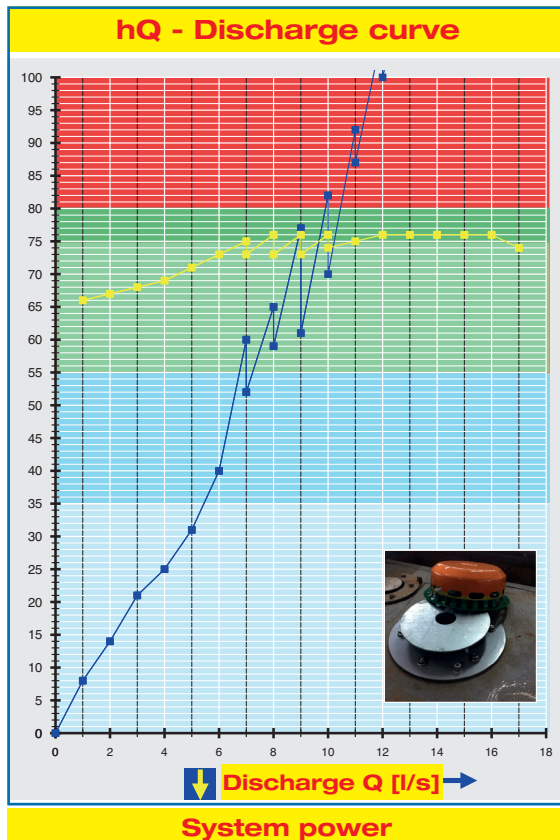
### Series 49 main-emergency combi



Main drainage	Emergency drainage
Gravity flow	Gravity flow
Silent	Silent Power
Combi	
Discharge: 5.4 l/s	Discharge: 3.4 l/s
Water height: 35 mm	Water height: 75 mm
Diameter: DN 100	Diameter: DN 50
LX-Number: LX 1845	LX-Number: LX 1845
Weir height: 0 mm	Weir height: 40 mm
Drain: not ventilated	Drain: not ventilated
Downpipe: not ventilated	Downpipe: not ventilated
Downpipe height: min. 4.2 m	Downpipe height: min. 4.2 m
Drainage: into ground pipe	Drainage: into the open
Flange: clamping flange	Flange: clamping flange

#### LX 1845 Piece list

1 x Art.-No. 21529.100X, main-emergency-combi roof drain



<b>Water height</b>	mm	10	15	20	25	30	35	40	45	50	55	60	65	70	75	80	85	90	95
<b>Discharge</b>	l/s	1,3	2,1	2,8	4,0	4,8	5,4	6,0	6,2	6,4	6,7	7,0	8,0	8,6	8,8	9,9	10,7	10,9	11,3
Silent																			

## LORO-X **Main-emergency-combi**, free-free, DN 100/50

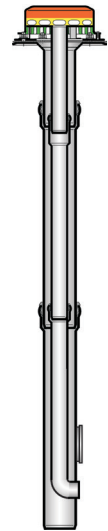
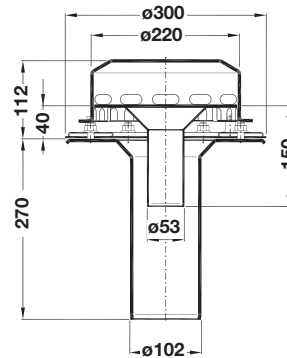
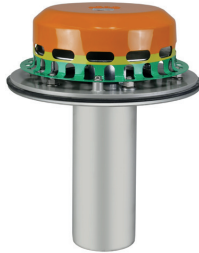
**LX1845-4X**

**Series 49**

Drain Art.-No. 21529.100X

Weight: 7.2 kg

**with clamping flange**



### LORO-X Pipe with long socket

- emergency pipe (inner pipe)  
for LORO-X **main-emergency-combi**  
parapet drainage  
galvanized steel, DN 50

500 mm long Art.-No. 01302.050X  
1000 mm long Art.-No. 01203.050X  
2000 mm long Art.-No. 01108.050X



### LORO-X Pipe with one socket

galvanized steel, **DN 100**  
1000 mm long Art.-No. 01201.070X  
2500 mm long Art.-No. 01004.070X



### LORO-X Sealing elements

DN 50  
Art.-No. 00911.050X  
DN 100  
Art.-No. 00911.100X



### LORO-X Anchor clips

DN 100  
Art.-No. 00806.100X



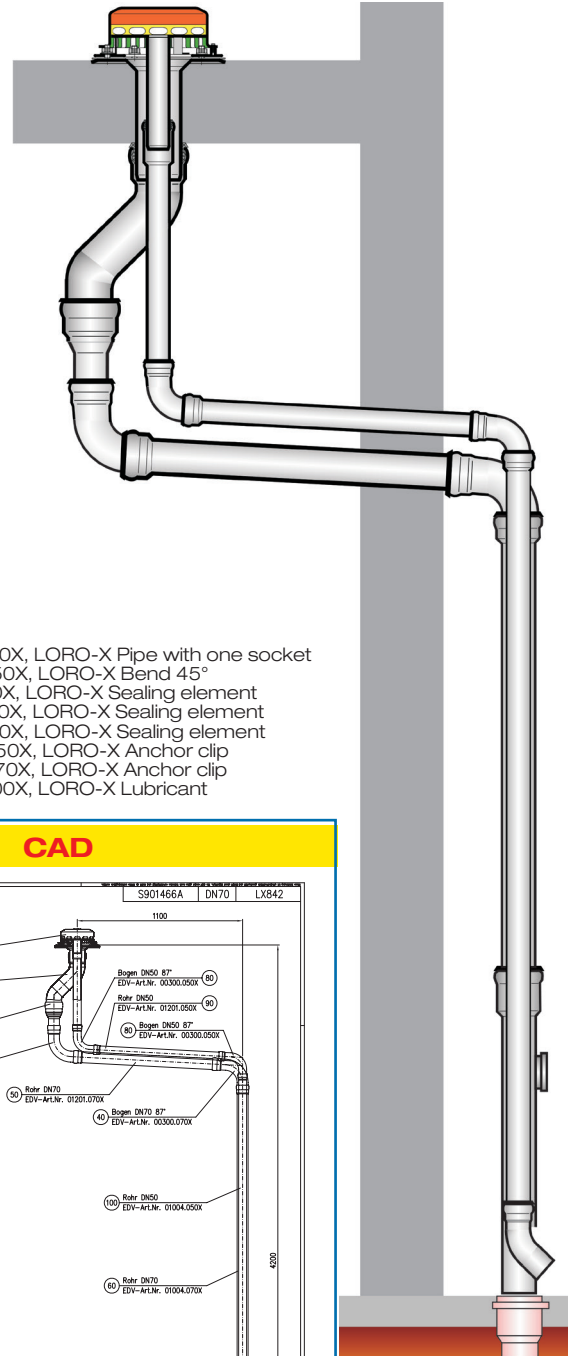
**Trace heating:** Lorowerk recommends to check all drains and pipes with regard to their frost-sensibility. Where necessary, these parts should be equipped with a trace heating.

# Specification sheet LX 842

## Roof drainage Main-emergency combi

### Main-emergency-combi

Siphonic flow		Siphonic flow	
Silent		Silent Power	
Discharge:	9.0 l/s	Discharge:	12.0 l/s
Water height:	40 mm	Water height:	75 mm
Diameter:	DN 100	Diameter:	DN 50
LX-Number:	LX 842	LX-Number:	LX 842
Weir height:	0 mm	Weir height:	40 mm
Drain:	not ventilated	Drain:	not ventilated
Downpipe:	not ventilated	Downpipe:	not ventilated
Downpipe height:	min 4.2 m	Downpipe height:	min 4.2 m
Drainage:	into ground pipe	Drainage:	into the open
Flange:	camping flange	Flange:	camping flange

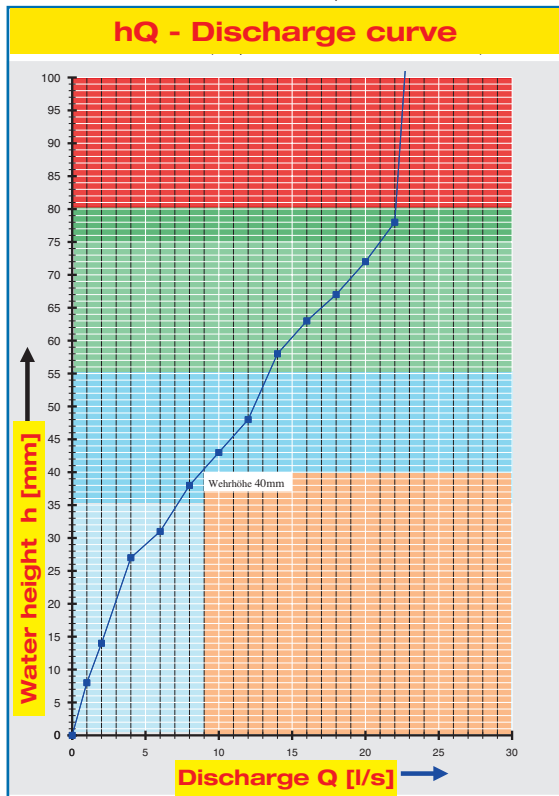


#### LX 842 Piece list

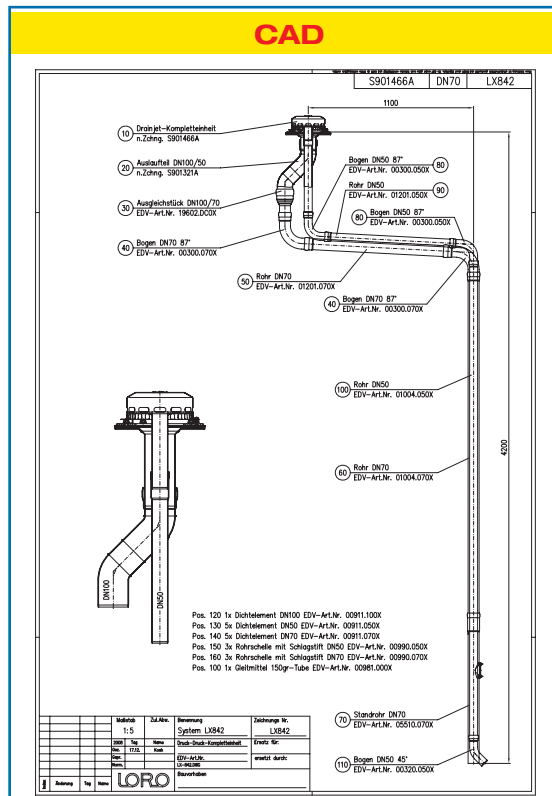
1 x Art.-No. Choose drain on page 2!

- 1 x Art.-No. 05048.DBOX, Main-emergency-combi runoff part
- 1 x Art.-No. 19602.DC0X, LORO-X DRAINJET Adjuster
- 2 x Art.-No. 00300.070X, LORO-X Bend 87°
- 1 x Art.-No. 01201.070X, LORO-X Pipe with one socket
- 1 x Art.-No. 01004.070X, LORO-X Pipe with one socket
- 1 x Art.-No. 05510.070X, LORO-X Standpipe
- 2 x Art.-No. 00300.050X, LORO-X Bend 87°
- 1 x Art.-No. 01201.050X, LORO-X Pipe with one socket

- 1 x Art.-No. 01004.050X, LORO-X Pipe with one socket
- 1 x Art.-No. 00320.050X, LORO-X Bend 45°
- 1 x Art.-No. 00911.100X, LORO-X Sealing element
- 5 x Art.-No. 00911.070X, LORO-X Sealing element
- 5 x Art.-No. 00911.050X, LORO-X Sealing element
- 3 x Art.-No. 00806.050X, LORO-X Anchor clip
- 3 x Art.-No. 00806.070X, LORO-X Anchor clip
- 1 x Art.-No. 00986.000X, LORO-X Lubricant



System power



System shape

Water height	mm	5	10	15	20	25	30	35	40	45	50	55	60	65	70	75
Discharge	l/s			2,0	3,0	3,8	5,5	7,0	9,0	10,5	12,2	13,5	15,0	17,0	19,0	21,0
									<b>Silent</b>				<b>Silent Power</b>			



## LORO-X Main-emergency-combi roof drainage system

Please choose a suitable drain!

#### without thermal insulation

##### LX842-5X

Drain: Art.-No. 21529.100X

**one-piece  
with clamping flange**

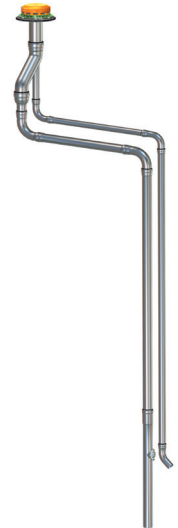


#### with thermal insulation

##### LX842-8X

Drain: Art.-No. 21528.100X

**two-piece  
with clamping flange**



#### System parts

##### LORO-X Runoff part

made of galvanized steel,  
**DN 100/50**  
Art.-No. 05048.DB0X



##### LORO-X Adjuster

made of galvanized steel,  
**DN 100/70**  
Art.-No. 19602.DC0X



##### LORO-X Pipe with one socket

made of galvanized steel, **DN 50**  
1000 mm long Art.-No. 01201.050X  
2500 mm long Art.-No. 01004.050X

made of galvanized steel, **DN 70**  
1000 mm long Art.-No. 01201.070X  
2500 mm long Art.-No. 01004.070X



#### System parts

##### LORO-X Bend

87°, made of galvanized steel,  
**DN 50**  
Art.-No. 00300.050X

45°, made of galvanized steel,  
**DN 50**  
Art.-No. 00320.050X

87°, made of galvanized steel,  
**DN 70**  
Art.-No. 00300.070X



##### LORO-X Rain standpipe

with cleaning opening,  
made of galvanized steel, DN 70  
Art.-No. 05510.070X  
Weight: 3.0 kg



##### LORO-X Sealing elements

DN 50  
Art.-No. 00911.050X  
DN 70  
Art.-No. 00911.070X



##### LORO-X Anchor clips

DN 50  
Art.-No. 00806.050X  
DN 70  
Art.-No. 00806.070X



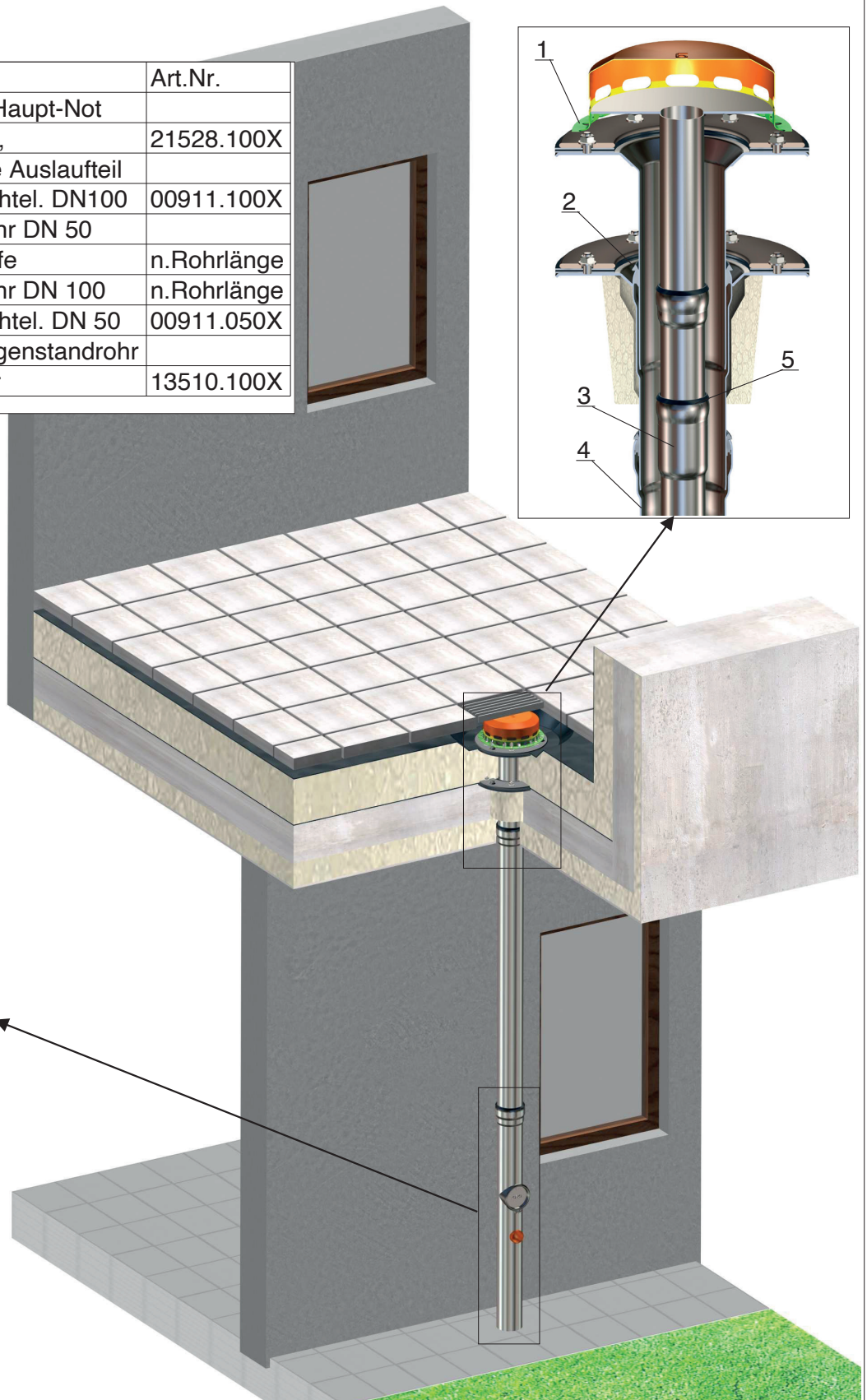
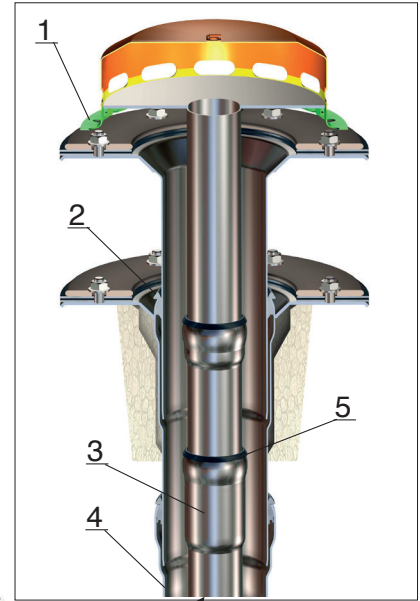
**Trace heating:** Lorowerk recommends to check all drains and pipes with regard to their frost-sensibility. Where necessary, these parts should be equipped with a trace heating.



**Application example:  
LORO-X roof drainage for central bus station in Hanover -  
1280 m<sup>2</sup> with 10 main-emergency-combi drains**



Pos.	Name	Art.Nr.
1	DRAINJET-Haupt-Not Kombiablauf, jedoch ohne Auslaufteil	21528.100X
2	LORO-X Dichtel. DN100	00911.100X
3	LORO-X Rohr DN 50 mit Langmuffe	n.Rohrlänge
4	LORO-X Rohr DN 100	n.Rohrlänge
5	LORO-X Dichtel. DN 50	00911.050X
6	LORO-X Regenstandrohr Rohr in Rohr	13510.100X



### Application example: LORO-X roof terrace drainage

**Peter J. Kuck**  
Kupferbergstraße 9  
67292 Kirchheimbolanden  
Export Director  
Tel. +49(0)160.712 5571  
e-mail: peter.kuck@lorowerk.de



**LOROWERK K.H. Vahlbrauk GmbH & Co. KG**

Kriegerweg 1 • 37581 Bad Gandersheim, Postfach 13 80 • 37577 Bad Gandersheim  
Tel. +49 5382 71 0 • Telefax +49 5382 71 2 03 • Internet: www.loro-x.de • e-mail: infocenter@lorowerk.de